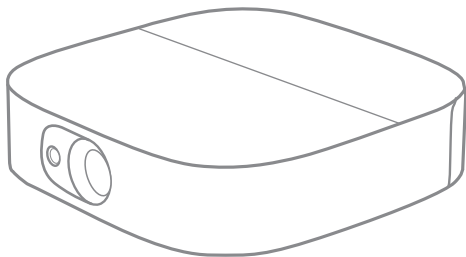


NEBULA

by Anker

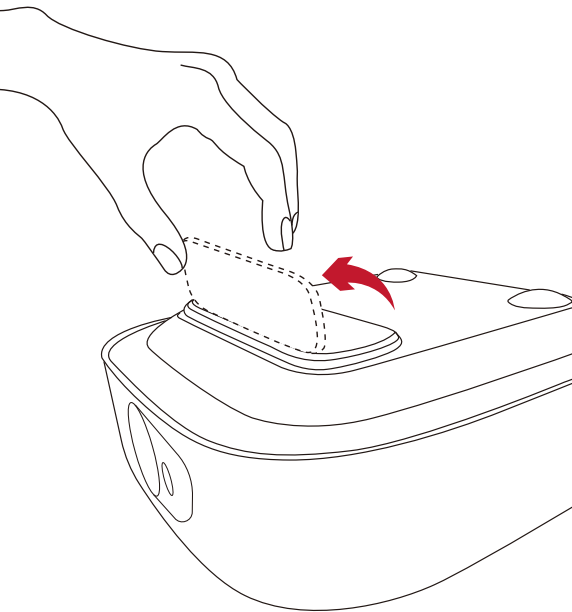
QUICK START GUIDE



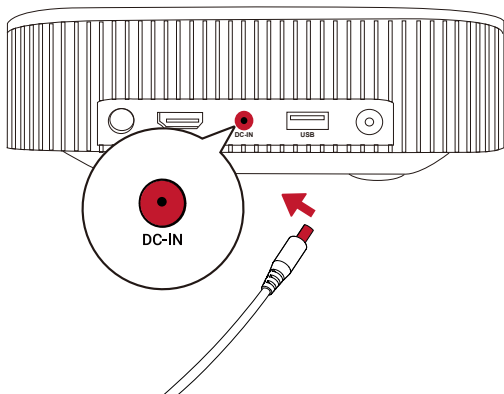
Nebula Vega /
Nebula Vega Portable

Placement	01
Charging Your Projector	02
Preparing the Remote Control	03
Powering On / Off	04
Adjusting the Focus	05
Control Buttons	06
Downloading the Nebula Connect App	07
Chromecast™	08
Playing Video from HDMI / USB Devices	09

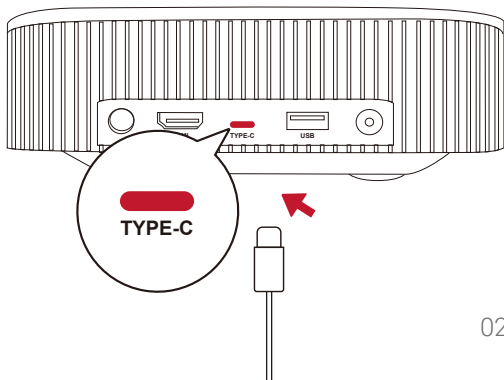
- ① Place Nebula Vega / Nebula Vega Portable on a flat, stable surface.
- ② Open the projector nameplate as illustrated to use it as a stand.

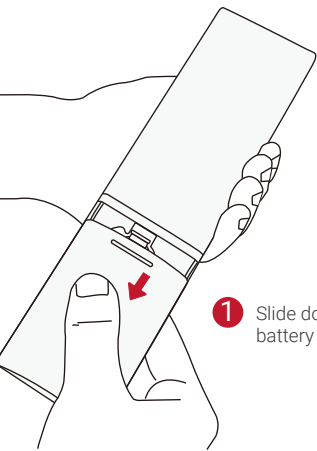


Nebula Vega

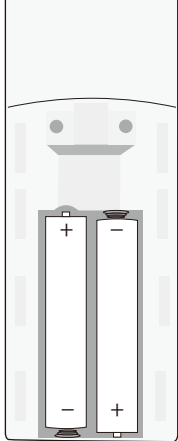


Nebula Vega Portable

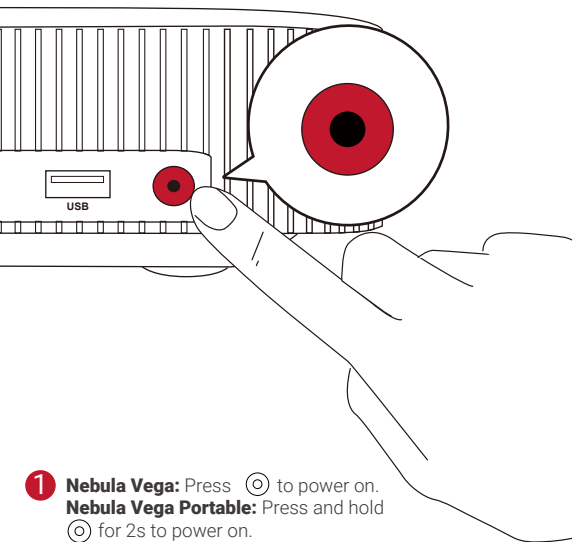








- 1** Slide down to open the battery compartment.




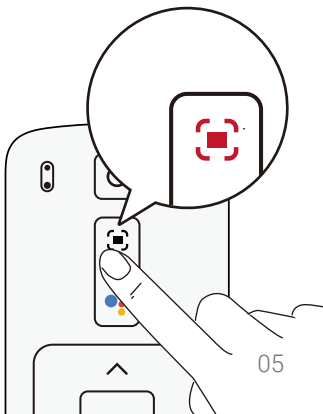
- 2** Insert new batteries, matching the polarity (+ / -) as indicated.

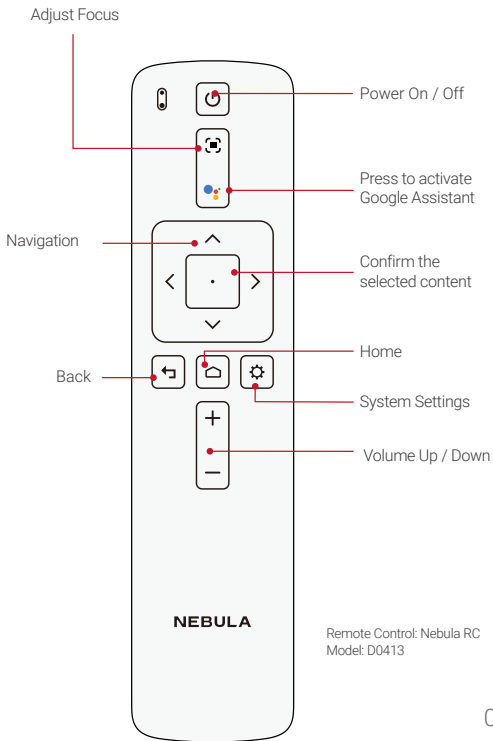


- 1 Nebula Vega:** Press  to power on.
Nebula Vega Portable: Press and hold  for 2s to power on.
- 2** Press and hold . A menu pops up. Select **Power Off** to turn off the projector.
- 3** When the projector is in standby mode, press  to turn on / off the projector.

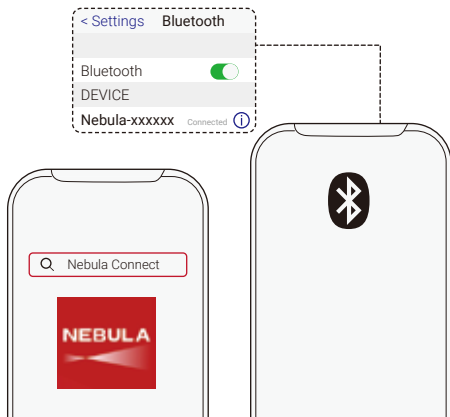


Press the  button on the remote control to adjust the focus.






- 1 Download the Nebula Connect app from the App Store (iOS devices) or Google Play (Android devices) to control your projector.
- 2 Enable Bluetooth on your smartphone.
- 3 Open the Nebula Connect app, and follow the on-screen instructions to complete the connection setup.

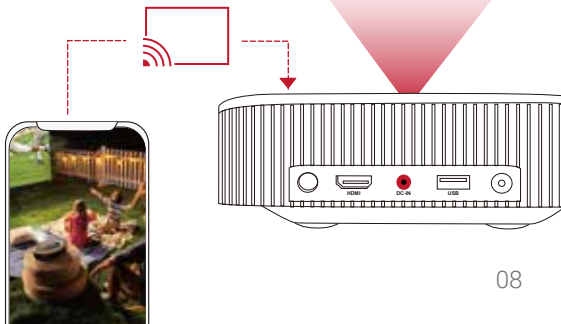


Wirelessly cast movies, games, and music from your phone to Nebula Vega / Nebula Vega Portable.

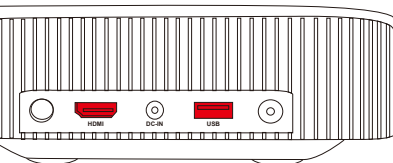
- 1 Play a video clip on your phone and then tap the cast icon  on the video screen.
- 2 Select the device "D2120" or "D2121" you want to cast to.
 - This projector will mirror the screen of the connected phone or computer.



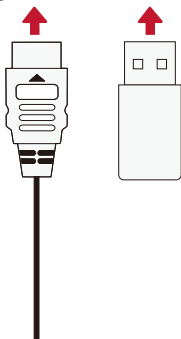
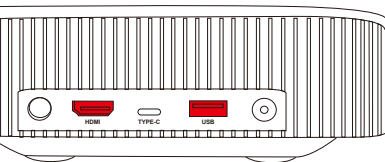
Make sure Nebula Vega / Nebula Vega Portable and your phone are connected to the same wireless network.



Nebula Vega



Nebula Vega Portable



The HDMI port and USB port cannot be used to simultaneously stream video and audio content.

Important Safety Instructions

- Due to the enclosure material, the product must only be connected to a USB 2.0 or higher.
- The adapter should be installed near the equipment and must be easily accessible.
- Do not use the device in an environment where the temperature is too high or too low. Never expose the device to strong sunshine or wet environments.
- The ideal temperature range for this product and its accessories is 41°F - 95°F / 5°C - 35°C.
- When charging, place the device in an environment with a temperature that ranges between 41°F - 77°F / 5°C - 25°C as well as good ventilation.
- Only use the charger provided by the manufacturer. Using unauthorized chargers may cause danger and violate the projector's guarantee.
- This charger is for indoor use only.
- The charger type for D2120 is NSA60ED-190300 with output voltage / current of DC 19V,3A Max.
The charger type for D2121 is PN653I with output voltage / current of 5V,3A/9V,3A/12V,3A/15VDC,3A/20VDC,3.25A.
The charger type for D2121 is A2713 with output voltage / current of 5V,3A/9V,3A/15VDC,3A/20VDC,3.25A.
- The plug of the adapter is considered as the disconnect device. Once unplugged, the charger is considered as disconnected from the power source.
- Possibly hazardous optical radiation emitted from this product, do not stare at operating lamp. Maybe harmful to the eyes.

Notice



This product complies with the radio interference requirements of the European Community.

Declaration of Conformity

Hereby, Anker Innovations Limited. declares that this device is in compliance with the essential requirements and other relevant provisions of Directive 2014/53/EU. For the Declaration of Conformity, visit the website: uk.seenebula.com.

RF exposure information for D2120/D2121: The Maximum Permissible Exposure (MPE) level has been calculated based on a distance of d=20 cm between the device and the human body. To maintain compliance with RF exposure requirements, use products that maintain a 20cm distance between the device and human body.

CAUTION RISK OF EXPLOSION IF BATTERY IS REPLACED BY AN INCORRECT TYPE. DISPOSE OF USED BATTERIES ACCORDING TO THE INSTRUCTIONS

Wifi Operating Frequency Range:2412~2472 MHz(2.4G);
5150~5250 MHz, 5725~5850 MHz (5G)

Wifi Max Output Power for D2120:18.47 dBm(ERIP for 2.4G);20.95 dBm(ERIP for 5G)

Wifi Max Output Power for D2121:18.22 dBm(ERIP for 2.4G);21.22 dBm(ERIP for 5G)

Bluetooth Operating Frequency Range:2402~2480 MHz;

Bluetooth Max Output Power for D2120:8.63 dBm(EIRP)

Bluetooth Max Output Power for D2121:7.38 dBm(EIRP)

5150~5250 MHz can be used indoors only.

	AT	BE	BG	HR	CY	CZ	DK
	EE	FI	FR	DE	EL	HU	IE
	IT	LV	LT	LU	MT	NL	PL
	PT	RO	SK	SI	ES	SE	UK

RF warning statement for D0413:

The device has been evaluated to meet general RF exposure requirement. The device can be used in portable exposure condition without restriction.

Bluetooth Operating Frequency Range(for D0413) : 2402~2480MHz;
Bluetooth Max Output Power(for D0413):4.346dBm(EIRP)

Anker Innovations Deutschland GmbH | Georg-Muche-Strasse 3,
80807 Munich, Germany



Your product is designed and manufactured with high quality materials and components, which can be recycled and reused.



This symbol means the product must not be discarded as household waste, and should be delivered to an appropriate collection facility for recycling. Proper disposal and recycling helps protect natural resources, human health and the environment. For more information on disposal and recycling of this product, contact your local municipality, disposal service, or the shop where you bought this product.



This product complies with the radio interference requirements of the United Kingdom Declaration of Conformity.

Hereby, Anker Innovations Limited declares that the product type D2121 is in compliance with Radio Equipment Regulations 2017.

The full text of the UK declaration of conformity is available at the following internet address: <https://uk.seenebula.com>

Anker Technology (UK) Ltd | Suite B, Fairgate House, 205 Kings Road, Tyseley, Birmingham, B11 2AA, United Kingdom

FCC Statement

This device complies with Part 15 of the FCC Rules. Operation is subject to the following two conditions: (1) this device may not cause harmful interference, and (2) this device must accept any interference received, including interference that may cause undesired operation.

Warning: Changes or modifications not expressly approved by the party responsible for compliance could void the user's authority to operate the equipment.

Note: This equipment has been tested and found to comply with the limits for a Class B digital device, pursuant to Part 15 of the FCC Rules. These limits are designed to provide reasonable protection against harmful interference in a residential installation.

This equipment generates, uses and can radiate radio frequency energy and, if not installed and used in accordance with the instruction manual, may cause harmful interference to radio communications. However, there is no guarantee that interference will not occur in a particular installation. If this equipment does cause harmful interference to radio or television reception, which can be determined by turning the equipment off and on, the user is encouraged to try to correct the interference by one or more of the following measures:

- Reorient or relocate the receiving antenna.
- Increase the separation between equipment and receiver.
- Connect the equipment into an outlet on a circuit different from that to which the receiver is connected.
- Consult the dealer or an experienced radio/TV technician for help.

Notice: Shielded cables

All connections to other computing devices must be made using shielded

cables to maintain compliance with FCC regulations.

The following importer is the responsible party.

Company Name: Fantasia Trading LLC

Address: 5350 Ontario Mills Pkwy, Suite 100, Ontario, CA 91764

Telephone: 1-800-988-7973



HDMI, and HDMI logo and High-Definition Multimedia Interface are trademarks or registered trademarks of HDMI licensing LLC in the United States and other countries.



AUDIO Manufactured under license from Dolby Laboratories. Dolby, Dolby Audio, Pro Logic, and the double-D symbol are trademarks of Dolby Laboratories.

Anker Innovations Limited
Room 1318-19, Hollywood Plaza, 610 Nathan Road, Mongkok,
Kowloon, Hong Kong

NEBULA

For FAQs and more information, please visit:

uk.seenebula.com



support@SeeNebula.com

+1 (800) 988 7973 (US) Mon-Fri 9:00am - 5:00pm (PT)

+44 (0) 1604 936200 (UK) Mon-Fri 6:00 - 11:00 (GMT)

+49 (0) 69 9579 7960 (DE) Mo-Fr 6:00 - 11:00

+81 03 4455 7823 (日本) 月 - 金 9:00 - 17:00

©Anker Innovations Limited. All rights reserved. NEBULA and the NEBULA logo are trademarks of Anker Innovations Limited, registered in the United States and other countries.

Anker Innovations Limited

Room 1318-19, Hollywood Plaza, 610 Nathan Road,
Mongkok, Kowloon, Hong Kong