

# SAMSUNG

## User Manual



VA81-01146Q-00  
NSPBI01285A-00

SWA-9200S

© 2022 Samsung Electronics Co., Ltd. All rights reserved.  
Contact **SAMSUNG WORLD WIDE**  
If you have any questions or comments relating to Samsung products, please contact the SAMSUNG customer care Centre.

Country/Area	Samsung Service Centre ☎	Web Site
CHINA	400-810-5858	www.samsung.com/cn/support
TAIWAN	0800-32-9999 (All Product) 0809-05-5237 (Only for HHP) 0809-05-5237 (B2B / Dealer) 0809-02-6868 (Samsung pay)	www.samsung.com/tw/support
HONG KONG	3698 4698 (All Product) 3698 4688 (B2B) 3698 4633 (eStore) 2121 9088 (Samsung pay)	www.samsung.com/hk/support (Chinese) www.samsung.com/hk_en/ support (English)
MACAU	0800 333	
SINGAPORE	1800 7267864 1800-SAMSUNG (Other) 1800 4252997 1800-GALAXY (HHP)	www.samsung.com/sg/support
AUSTRALIA	1300 362 603 (Other) 1300 425 299 (HHP)	www.samsung.com/au/support
NEW ZEALAND	0800 726 786 (All Product) 0800 678 786 (Support for Smart Mobile Devices)	www.samsung.com/nz/support
VIETNAM	1800 588 889 (All Product) 1800-588-855 (HHP)	www.samsung.com/vn/support
THAILAND	Hotline no.: 1282 1800-29-3232 (Toll free for all product)	www.samsung.com/th/support
MYANMAR	+95-1-2399-888 VIP HHP +95-1-2399-990	www.samsung.com/mm/ support
CAMBODIA	1800-20-3232 (Toll free)	
LAOS	+856-214-17333	www.samsung.com/th/support
MALAYSIA	1800-22-8899 (HHP) 1800-88-9999 (OTH) +603-7713 7420 (Overseas contact)	www.samsung.com/my/support

Country/Area	Samsung Service Centre ☎	Web Site
INDONESIA	021-5699-7777 0800-112-8888 (All Product, Toll Free) 0800-112-7777 (All Product, Toll Free)	www.samsung.com/id/support
PHILIPPINES	Dedicated Hotline for Mobile Phones #GALAXY (just dial #425209)	www.samsung.com/ph/support
INDIA	All Products : 1-800-10-7267864 [ PLOT - Toll Free ] 1-800-8-7267864 [ Globe - Toll Free ] 84222111 [ Landline ]	
NEPAL	1800 5 SAMSUNG (1800 5 7267864) (Toll-Free) 1800 40 SAMSUNG (1800 40 7267864) (Toll-Free) 16600172667 (Toll Free for NTC only) www.samsung.com/in/ support 9801572667 (Toll Free for Ncell users)	www.samsung.com/in/support
SRI LANKA	011 SAMSUNG (011 7267864)	
BANGLADESH	08000-300-300 (Toll free) 09612-300-300	www.samsung.com/bd/support

## SAFETY INFORMATION

Thank you for purchasing this product (SWA-9200S).

CAUTION	RISK OF ELECTRIC SHOCK. DO NOT OPEN.
CAUTION: TO REDUCE THE RISK OF ELECTRIC SHOCK, DO NOT REMOVE THE COVER (OR BACK). NO USER-SERVICEABLE PARTS ARE INSIDE. REFER SERVING TO QUALIFIED SERVICE PERSONNEL. Refer to the table below for an explanation of symbols which may be on your Samsung product.	
	This symbol indicates that high voltage is present inside. It is dangerous to make any kind of contact with any internal part of this product.
	This symbol indicates that this product has included important literature concerning operation and maintenance.
	Class II product : This symbol indicates that it does not require a safety connection to electrical earth (ground). If this symbol is not present on a product with a power cord, the product MUST have a reliable connection to protective earth (ground).
	AC voltage : This symbol indicates that the rated voltage marked with the symbol is AC voltage.
	DC voltage : This symbol indicates that the rated voltage marked with the symbol is DC voltage.
	Caution, Consult instructions for use : This symbol instructs the user to consult the user manual for further safety related information.

- The slots and openings in the cabinet and in the back or apparatus are provided for necessary ventilation. To ensure reliable operation of this apparatus, and to protect it from overheating, these slots and openings must never be blocked or covered.
  - Do not place this apparatus in a confined space, such as a bookcase, or built-in cabinet, unless proper ventilation is provided.
  - Do not place this apparatus near or over a radiator or heat register, or where it is exposed to direct sunlight.
  - Do not place vessels (vases etc.) containing water on this apparatus. A water spill can cause a fire or electric shock.
- Do not expose this apparatus to rain or place it near water (near a bathtub, washbowl, kitchen sink, or laundry tub, in a wet basement, or near a swimming pool, etc.). If this apparatus accidentally gets wet, unplug it and contact an authorized dealer immediately.
- Do not overload wall outlets, extension cords or adaptors beyond their capacity, since this can result in fire or electric shock.
- Route power-supply cords so that they are not likely to be walked on or pinched by items placed on or against them. Pay particular attention to cords at the plug end, at wall outlets, and the point where they exit from the apparatus.
- To protect this apparatus from a lightning storm, or when it is left unattended and unused for long periods of time, unplug it from the wall outlet and disconnect the antenna or cable system. This will prevent damage to the set due to lightning and power line surges.
- Before connecting the AC power cord to the DC adaptor outlet, make sure the voltage designation of the DC adaptor corresponds to the local electrical supply.
- Never insert anything metallic into the open parts of this apparatus. Doing so may create a danger of electric shock.

- To avoid electric shock, never touch the inside of this apparatus. Only a qualified technician should open this apparatus.
- Make sure to plug the power cord in until it is firmly seated. When unplugging the power cord from a wall outlet, always pull on the power cord's plug. Never unplug by pulling on the power cord. Do not touch the power cord with wet hands.
- If this apparatus does not operate normally - in particular, if there are any unusual sounds or smells coming from it - unplug it immediately and contact an authorized dealer or service centre.
- Maintenance of Cabinet.
  - Before connecting other components to this product, be sure to turn them off.
- Be sure to pull the power plug out of the outlet if the product is to remain unused or if you are leaving the house for an extended period of time (especially when children, elderly, or disabled people will be left alone in the house).
  - Accumulated dust can cause an electric shock, an electric leakage, or a fire by causing the power cord to generate sparks and heat or the insulation to deteriorate.
- Contact an authorized service centre for information if you intend to install your product in a location with heavy dust, high or low temperatures, high humidity, chemical substances, or where it will operate 24 hours a day such as in an airport, a train station, etc. Failing to do so may cause serious damage to your product.
- Use only a properly grounded plug and wall outlet.
  - An improper ground may cause electric shock or equipment damage. (Class I Equipment only.)

- To turn this apparatus off completely, you must disconnect it from the wall outlet. Consequently, the wall outlet and power plug must be readily accessible at all times.
- Do not allow children to hang on the product.
- Store the accessories (battery, etc.) in a location safely out of the reach of children.
- Do not install the product in an unstable location such as a shaky self, a slanted floor, or a location exposed to vibration.
- Do not drop or strike the product. If the product is damaged, disconnect the power cord and contact a service centre.
- To clean this apparatus, unplug the power cord from the wall outlet, and then wipe the product using a soft, dry cloth. Do not use any chemicals such as wax, benzene, alcohol, thinners, insecticide, air fresheners, lubricants, or detergent. These chemicals can damage the appearance of the product or erase the printing on the product.
- Do not expose this apparatus to dripping or splashing. Do not put objects filled with liquids, such as vases, on the apparatus.
- Do not plug multiple electric devices into the same wall socket. Overloading a socket can cause it to overheat, resulting in a fire.

### WARNING

- TO PREVENT THE SPREAD OF FIRE, KEEP CANDLES AND OTHER ITEMS WITH OPEN FLAMES AWAY FROM THIS PRODUCT AT ALL TIMES.
- To reduce the risk of fire or electric shock, do not expose this appliance to rain or moisture.



## Precautions

- Ensure that the AC or DC power supply in your house complies with the power requirements listed on the identification sticker located on the rear of your product. Keep these operating instructions handy for future reference.
  - Read these instructions.
  - Keep these instructions.
  - Heed all warnings.
  - Follow all instructions.
  - Do not use this apparatus near water.
  - Clean only with a dry cloth.
  - Do not block any ventilation openings. Install in accordance with the manufacturer's instructions.
  - Do not install near any heat sources such as radiators, heat registers, stoves, or other apparatus (including AV receivers) that produce heat.
  - Do not defeat the safety purpose of the polarized or grounding-type plug. A polarized plug has two blades with one wider than the other. A grounding type plug has two blades and a third grounding prong. The wide blade or the third prong are provided for your safety. If the provided plug does not fit into your outlet, consult an electrician for replacement of the obsolete outlet.
- Protect the power cord from being walked on or pinched particularly at plugs, convenience receptacles, and the point where it exits the apparatus.
- Only use attachments/accessories specified by the manufacturer.
- Use only with the cart, stand, tripod, bracket, or table specified by the manufacturer, or sold with the apparatus. When a cart is used, use caution when moving the cart/apparatus combination to avoid injury from tip-over.
- Unplug this apparatus during lightning storms or when you intend to leave it unused for long periods of time.
- Refer all servicing to qualified service personnel. Servicing is required when the apparatus has been damaged in any way, such as when the power-supply cord or plug is damaged, liquid has been spilled or objects have fallen into the apparatus, the apparatus has been exposed to rain or moisture, does not operate normally, or has been dropped.



## 01 CHECKING THE COMPONENTS

Surround Speaker X 2 / Speaker Cable / AC/DC Adapter / Power Cord

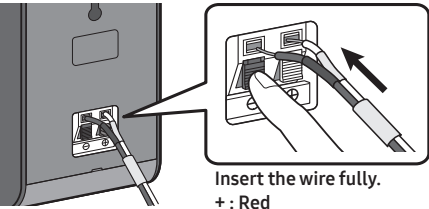
### NOTE

- For more information about the power supply and power consumption, refer to the label attached to the product. (Label: Rear of the Main Unit)
- Design and specifications are subject to change without prior notice.

## 02 CONNECTING THE SWA-9200S TO A SOUNDBAR

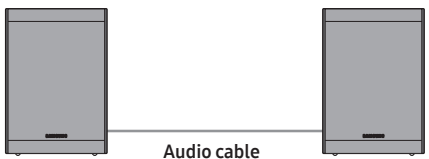
### 1. Connect the Surround speaker cables

- Use the speaker cables to connect the two surround sound speakers.
- When connecting the speaker cable, connect the core wire to the speaker.
- Insert the wire fully, taking care not to insert beyond the wire insulation.



Insert the wire fully.  
+: Red  
-: Black

- When connecting the speaker cables to the surround speakers, follow these steps:
  - Insert the red and black colored ends of each speaker cable into the red and black jacks of the appropriate speaker.
  - The labels are on the backs of the speakers.



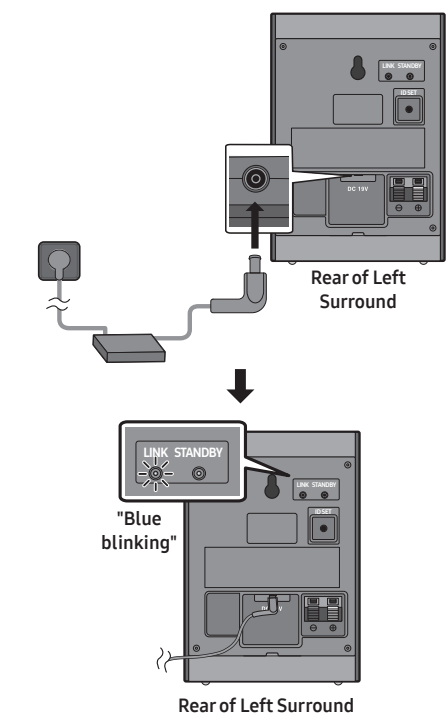
Audio cable

- The length of the speaker audio cable: 6 m

### 2. Turn on the Surround speakers

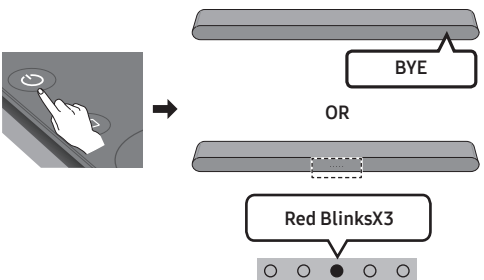
Plug the Surround speakers' power cord into an electrical outlet to turn on the Surround speakers. The **LINK LED** indicator (blue LED) on the rear of left surround speaker will blink quickly.

If the **LINK LED** does not blink, please see step 6.



### 3. Turn off the Soundbar

If the Soundbar is turned on, please turn off the Soundbar by pressing the **U (Power)** button on the Soundbar or remote control.

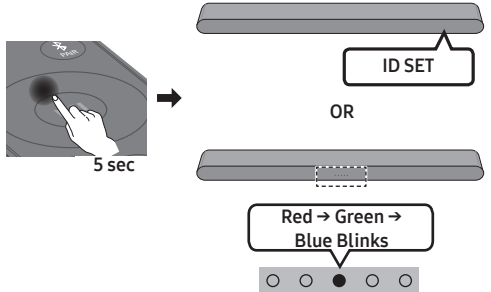


- The image of the Soundbar may differ from your Soundbar, depending on the model.

### 4. Connect Soundbar and Surround Speakers

Press the **Up** button on the remote control for more than 5 seconds until the "**ID SET**" message appears on the Soundbar's display. The message will disappear shortly. (If your Soundbar does not have a display window and only LED indicators, please refer to the LED information below.)

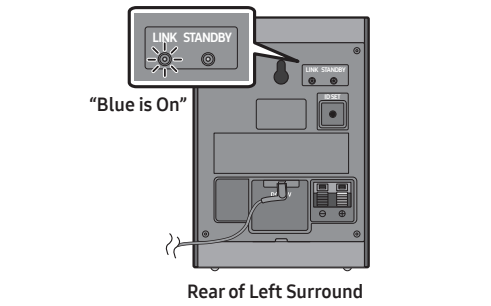
- After the **ID SET** process is successful, the Soundbar will turn on automatically.



- The image of the Soundbar may differ from your Soundbar, depending on the model.

### 5. Check the connection complete

The **LINK LED** stops blinking and changes to solid blue when the Soundbar and surround speakers are successfully linked. Please turn off the Soundbar and turn it back on. Confirm that the **LINK LED** is blue. (It may take a minute depending on the environment.)



- If the **LINK LED** does not turn to solid blue in a minute, please repeat from step 2 through 5 referring to step 6 (**LED indicator's status**).

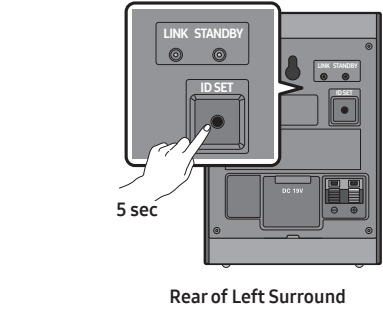
### 6. LED Indicator's status

**LINK (Blue) On** : Connected with the Soundbar.

- LINK (Blue) Blinking fast (at an interval of around 0.5 second)** : Surround speakers are in **ID SET** mode.
  - Check if the Soundbar is turned on and in **ID SET** mode.
  - Repeat steps 3 through 5.

**LINK (Blue) Blinking slow (at an interval of around 1 second)** : Previously connected to a Soundbar but cannot currently find it.

- Check if the Soundbar is turned on.
- If the **LINK LED** keeps blinking slowly even when the Soundbar is turned on,
  - Press the **ID SET** button on the rear of the left surround for more than 5 seconds until the **LINK LED** starts blinking fast in blue.



Rear of Left Surround

2. Repeat steps 3 through 5.

**STANDBY (Red) On** : When the Soundbar turns off or connection has failed.

- Follow the instructions for "**Link (Blue) Blinking slow (at an interval of around 1 second)**" above.

Others : Errors

- Contact a Samsung Service Centre.

## 03 TROUBLE SHOOTING

### There is no sound from Surround Speakers

- If the Surround speakers are successfully paired and connected to a Soundbar, the **LINK LED** indicator on the rear of the Left Surround is on and solid blue. Please reconnect the Surround speakers to your Soundbar referring to **02-6, LED Indicator's status**.
- Other devices sending radio frequency signals in proximity may interrupt the connection. Please keep your speaker away from such devices.
- The content you are playing may have no surround track but only stereo. Please change the sound mode to Surround by pressing **SOUND MODE** button on the remote control.

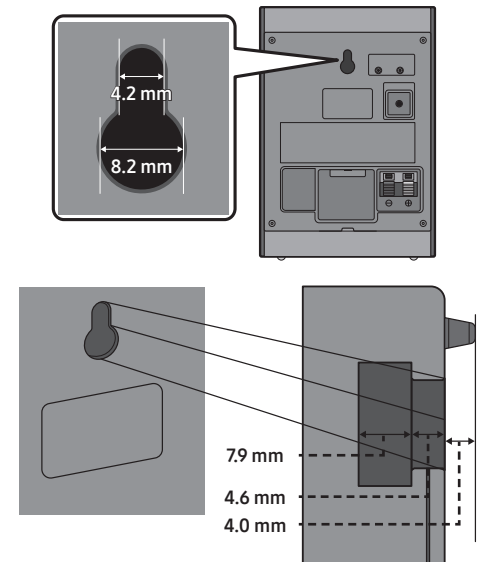
There is sound jitter, delays, noise or dropout from the sound of Surround Speakers.

- There may be sound jitter or delays when the Surround Speakers are far from the Soundbar. Please place them near the Soundbar.
- There may be sound jitter or delays when the Soundbar is near an electrical device that can cause radio interference. Please place the Soundbar far from such devices that can cause radio interference (e.g. wireless router).
- Please change the TV network connection status from wireless to wired.

### The volume of Surround Speakers is too low

- Please increase the rear level referring to the manual of your Soundbar. (You can download the manual of your Soundbar from [www.samsung.com/support](http://www.samsung.com/support))

## 04 MOUNTING ON A WALL



- Be sure the wall is stable. If the wall is weak, reinforce it before installation.
- Take care not to install the speakers sideways or upside down.
- Samsung Electronics is not liable for any damage to the product due to improper installation.
- Wall mounts aren't sold by Samsung Electronics.

## 05 COMPATIBLE MODELS

- Compatible with select Samsung Soundbar. Please visit the Soundbar product page at [www.samsung.com/support](http://www.samsung.com/support) for more information.
- Compatible model list is subject to change without further notice.

## 06 OPEN SOURCE LICENSE NOTICE

To send inquiries and requests for questions regarding open sources, contact Samsung Open Source (<http://opensource.samsung.com>)

## Important Safety Instructions

Read these operating instructions carefully before using the unit. Follow all the safety instructions listed below. Keep these operating instructions handy for future reference.

- Read these instructions.
- Keep these instructions.
- Heed all warnings.
- Follow all instructions.
- Do not use this apparatus near water.
- Clean only with a dry cloth.
- Do not block any ventilation openings. Install in accordance with the manufacturer's instructions.
- Do not install near any heat sources such as radiators, heat registers, stoves, or other apparatus (including AV receivers) that produce heat.
- Do not defeat the safety purpose of the polarized or grounding-type plug. A polarized plug has two blades with one wider than the other. A grounding type plug has two blades and a third grounding prong. The wide blade or the third prong are provided for your safety. If the provided plug does not fit into your outlet, consult an electrician for replacement of the obsolete outlet.
- Protect the power cord from being walked on or pinched particularly at plugs, convenience receptacles, and the point where it exits the apparatus.
- Only use attachments/accessories specified by the manufacturer.
- Use only with the cart, stand, tripod, bracket, or table specified by the manufacturer, or sold with the apparatus. When a cart is used, use caution when moving the cart/apparatus combination to avoid injury from tip-over.
- Unplug this apparatus during lightning storms or when you intend to leave it unused for long periods of time.
- Refer all servicing to qualified service personnel. Servicing is required when the apparatus has been damaged in any way, such as when the power-supply cord or plug is damaged, liquid has been spilled or objects have fallen into the apparatus, the apparatus has been exposed to rain or moisture, does not operate normally, or has been dropped.



# SAMSUNG

## 使用者手冊



VAS1-011460-00  
NSPB101285A-00

SWA-9200S

© 2022 Samsung Electronics Co., Ltd. All rights reserved.







聯絡全球 SAMSUNG

如果您對 Samsung 的產品有任何疑問或意見，請聯絡 SAMSUNG 客服中心。

國家/地區	Samsung 服務中心 窗	網站
CHINA	400-810-5858	www.samsung.com/cn/support
TAIWAN	(800-32-9999 (All Product) (800-05-5237 (Only for HHP) (800-00-5237 (R2B / Dealer) (809-02-6868 (Samsung pay)	www.samsung.com/tw/support
HONG KONG	3698 4698 (All Product) 3698 4698 (R2B) 3698 4633 (cStore) 2121 9088 (Samsung pay)	www.samsung.com/hk/support (Chinese) www.samsung.com/hk_cn/support (English)
MACAU	0800 333	
SINGAPORE	1800 7267864 (1800-SAMSUNG (Other) 1800 4252997 (1800-GALAXYS (HHP)	www.samsung.com/sg/support
AUSTRALIA	1300 362 603 (Other) 1300 425 299 (HHP)	www.samsung.com/au/support
NEW ZEALAND	(800) 726 786 (All Product) (800) 6 726 786 (Support for Smart Mobile Devices)	www.samsung.com/nz/support
VIETNAM	(1800 588 889 (All Product) 1800-588-855 (HHP)	www.samsung.com/vn/support
THAILAND	Hotline no.: 1282 1800-29-3232 (Toll free for all product)	www.samsung.com/th/support
MYANMAR	+95-1-2399-888 VIP HHP +95-1-2399-990	www.samsung.com/mm/support
CAMBODIA	1800-20-3232 (Toll free)	www.samsung.com/bs/support
LAOS	+856-214-17333	
MALAYSIA	1800-22-8899 (HHP) 1800-88-9999 (CTTB) +603-7113 7420 (Overseas contact)	www.samsung.com/my/support

## 安全資料

感謝您購買本產品 (SWA-9200S)。

注意
<b>有電擊危險。切勿打開。</b>
<b>注意：</b> 為減少觸電的危險，切勿移除機蓋（或後蓋）。內部沒有使用者可自行維修的零件。請聯絡合資格的服務人員進行維修。參閱下表，以取得三星產品上標註的註釋。
 此符號表示內部存在高電壓。以任何形式接觸本產品的任何內部零件都會產生危險。
 此符號表示此產品已隨附與操作和維護有關的重要文獻。
 II 類產品：此符號表示無需連接安全接地線（地線）。如此標誌沒有在帶有電源線的產品上出現，則產品必須正確連接保護地線。
 AC 交流電壓：此符號表示標有此符號的額定電壓是 AC DC 電壓。
 DC 交流電壓：此符號表示標有此符號的額定電壓是 DC DC 電壓。
 注意，請參閱使用說明：此符號指示使用者應參閱使用者手冊，以進一步了解與安全相關的資訊。

- 機櫃和背面或底部的插槽和開口用作通風用途。為確保該設備可如常運作並防止過熱，這些插槽和開口絕不能被堵塞或遮蓋。
  - 除非有適當的通風，否則切勿將此設備放在密閉空間，例如書櫃或嵌入式櫥櫃。
  - 切勿將本設備放在散熱器或熱度調節器附近或上方，或將其置於陽光直射的地方。
  - 切勿將盛有液體的容器（例如花瓶等）放在本設備上。接觸到水份可能會導致火災或觸電。
- 切勿將本設備暴露於雨中或將其放置在液體附近（例如浴缸、洗臉盆、廚房水槽或洗衣盆附近、潮濕的地下室或游泳池附近等）。如果意外弄濕本設備，請拔出電源插頭並立即聯絡授權經銷商。
- 切勿使牆壁插座、延長線或適配器過載，以免超出其容量。因為這樣可能會導致火災或觸電。
- 連接好電源線，使其不會被踩到或被放置在設備上或靠在設備上的物品壓到。請特別注意插頭端、牆壁插座上的電線以及它們連接設備的位置。
- 為保護本設備免受雷暴影響，在長時間無人看管和無人使用時，請將其從牆上插座拔出並中斷連接天線或纜線系統。這樣可防止設備因閃電和電源線浪湧而受損。
- 將 AC 電源線連接到 DC 變壓器插座之前，請確保 DC 變壓器的電壓與當地的電壓要求相符。
- 切勿將任何金屬物品插入本設備的開口部分。這樣做可能會引致觸電。

- 為避免觸電，切勿觸摸本設備的內部。只有合資格的技術人員才可打開此設備。
- 確保電源線已插穩。從牆壁插座拔出電源線時，一律要拿著電源線的插頭。切勿透過拉扯電源線來拔出插頭。雙手沾濕時，切勿觸摸電源線。
- 如果本設備無法正常運作，特別是發出任何異常聲音或氣味時，請立即拔出插頭並聯絡授權經銷商或服務中心。
- 保養機櫃。
  - 將其組件連接至本產品之前，必須先將其關閉。
  - 如果產品無人使用或您要長時間離開家居（特別是兒童、老人或殘障人士獨留家中時），請從插座中拔出電源插頭。
    - 機櫃的灰塵會導致電源線產生火花和發熱，或令絕緣劣化，從而導致觸電、漏電或火災。
  - 如果您打算將產品安裝在多塵、高溫或低溫、高濕度、有化學物質的地方，或者將在機場、火車站等需要全天候 24 小時運作的地方，請聯絡授權服務中心獲取相關資訊，否則可能會對您的產品造成嚴重損壞。
  - 只可使用有正確接地的插頭和牆壁插座。
    - 接地不當可能導致觸電或設備受損。（僅限 L 類設備。）

- 如要完全關閉本設備，必須從牆壁插座中拔出電源插頭。因此，人牆壁插座和電源插頭必須放在易於使用的位置。
- 切勿讓兒童攀爬相關產品。
- 將配件（電池等）存放在兒童接觸不到的安全位置。
- 切勿將本產品安裝在不穩定的位置，例如搖晃的書架、傾斜的地板或易受振動的位置。
- 切勿掉落或撞擊相關產品。如果產品損壞，請中斷連接電源線並聯絡服務中心。
- 如要清潔此設備，請從牆壁插座拔出電源線，然後使用柔軟的乾布擦拭產品。切勿使用任何化學品，例如蠟、苯、酒精、稀釋劑、殺蟲劑、空氣清新劑、潤滑劑或清潔劑。這些化學物質會損壞產品的外觀或擦去產品上的印刷。
- 切勿將本設備暴露於有滴水或澆水的地方。切勿將花瓶等裝滿液體的物品放在此設備上。
- 切勿將多部電子裝置插入同一個牆壁插座。插座過載會導致其過熱，從而導致火災。

### 警告

- 為了防止火勢蔓延，本產品應一律遠離蠟燭和其他有明火的物品。
- 為減少觸電的危險，切勿將本產品暴露於雨水或水份之中。



## 注意事項

- 確定您屋內的 AC 或 DC 電源供應符合產品背面識別標籤上列出的電源要求。
  - 在合適的底座（傢俱）上水平安裝產品，並且週圍留有足夠的通風空間（7~10 厘米）。確定通風槽不被覆蓋。請勿將裝置放在擴音器或其他可能會變熱的設備上。本裝置是專為連續使用而設計。若要完全關閉電源，請從牆上插座拔出交流插頭。
- 請勿將裝置直接曝曬於陽光下或其他熱源中。這可能會引起過熱並導致裝置故障。
- 如果裝置發生故障，從牆上 AC 插座拔出電源線。您的產品不適合工業使用。它是僅供個人使用。如果存儲在寒冷的低溫下，產品可能會出現冷凝。如果在冬季運輸裝置，等待大約 2 小時，直到裝置達到室溫後才使用。
- 如果家居的電源額為 240V AC，請使用合適的插頭適配器將本機連接到您的電源插座。

## 重要安全說明

- 在使用本機之前，請仔細閱讀這些操作說明。請遵循下列所有安全說明。並將這些操作說明放在易於取用的位置，以便將來參考。
- 閱讀這些說明。
  - 保留這些說明。
  - 注意所有警告。
  - 遵循所有說明。
  - 切勿在靠近水的地方使用本設備。
  - 只要使用乾布清潔。
  - 不要堵塞任何通風口。按照製造商的說明進行安裝。
  - 請勿安裝在任何熱源附近，例如散熱器、熱調節器、火爐或其他產生熱量的設備（包括 AV 接收器）。
  - 切勿破壞極化或接地型插頭的安全用途。極化插頭有兩塊刀片，其中一邊比另一邊寬。接地型插頭有兩塊刀片和第三個接地插腳。寬刀片或第三個接地插腳是為了保障您的安全而設計。如果提供的插頭不適合您的插座，請向電工諮詢以更換適時的插座。
  - 保護電源線不被踩到或夾住，特別是在插頭、便利插座和連接設備的位置。
  - 只可使用製造商指定的附件/配件。
  - 只能配合製造商指定或隨設備一起出售的推車、三腳架、支架或桌子使用。使用推車時，移動推車/設備組合時請小心，以免翻倒造成傷害。
  - 在雷雨天氣或打算長時間不使用時，請拔出自本設備的插頭。
  - 請聯絡合資格的服務人員進行維修。當設備受到任何方式的損壞時必須維修，例如電源線或插頭損壞、液體灑出或有物體落入設備、設備暴露於雨中或受潮、無法正常運作或丟失。



## 01 檢查元件

環境聲揚聲器 X 2 / 揚聲器纜線 / AC / DC 電適配器 / 電源線
---

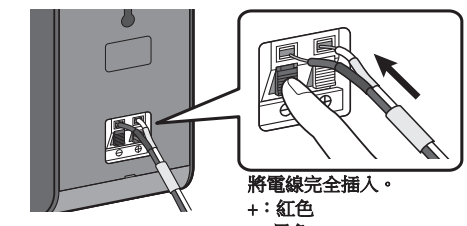
### 注意

- 如需更多有關電源供應及耗電的資料，請見產品上附有的標籤。（標籤：主設備背面）
- 設計和規格如有變更，恕不另行通知。

## 02 將 SWA-9200S 連接至 SOUNDBAR

### 1. 連接環境聲揚聲器纜線

- 用揚聲器纜線連接兩部環境聲揚聲器。
- 連接揚聲器纜線時，請將主線連接至揚聲器。
- 將纜線完全插入，注意不要超出電線絕緣層。



將電線完全插入。  
+：紅色  
-：黑色

- 用揚聲器纜線連接兩部環境聲揚聲器時，請按照以下步驟操作：
  - 將每條揚聲器纜線的紅色和黑色端插入相應揚聲器的紅色和黑色插孔。
  - 標籤位於揚聲器的背面。

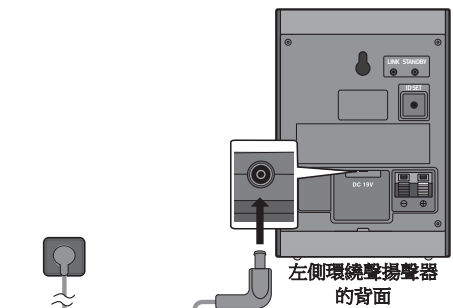


揚聲器音訊線的長度：6 米

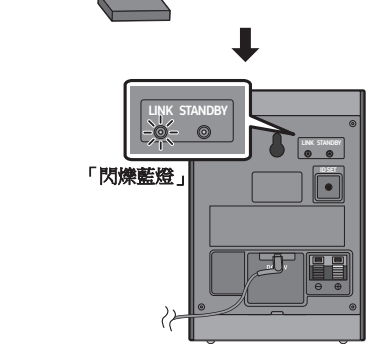
### 2. 開啟環境聲揚聲器

將環境聲揚聲器的電源線連接至電源插座，以開啟環境聲揚聲器。左側環境聲揚聲器背面的 LINK LED 指示燈（藍色 LED）會快速閃爍。

若 LINK LED 沒有閃爍，請參閱第 6 步。



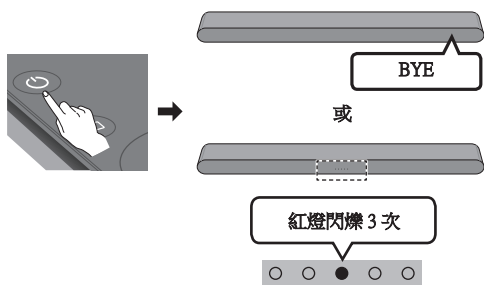
左側環境聲揚聲器的背面



左側環境聲揚聲器的背面

### 3. 關閉 Soundbar

如果 Soundbar 已開啟，請按 Soundbar 或遙控器上的 （電源）按鈕關閉 Soundbar。



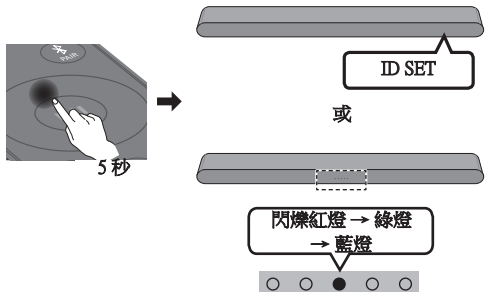
- 視乎型號而定，Soundbar 的圖像可能與您的 Soundbar 不同。

### 4. 連接 Soundbar 和環境聲揚聲器

按遙控器的向上按鈕 5~6 秒，直到 Soundbar 顯示器螢幕上出現 ID SET 訊息。該訊息將很快消失。

（如果您的 Soundbar 沒有顯示視窗，而且只有 LED 指示燈，請參閱下方的 LED 訊息。）

- 成功完成 ID SET 程序後，Soundbar 將會自動開啟。

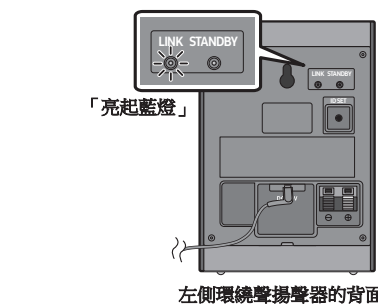


- 視乎型號而定，Soundbar 的圖像可能與您的 Soundbar 不同。

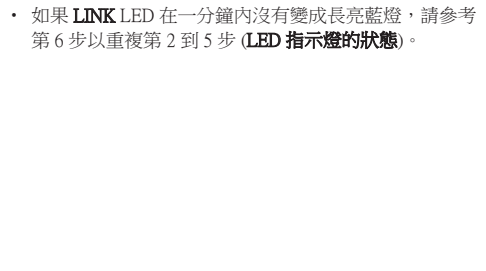
### 5. 檢查連接是否已經完成

Soundbar 與環境聲揚聲器之間成功建立連線時，LINK LED 指示燈將會停止閃爍，並長亮藍色燈。

請關閉並重新開啟 Soundbar。確認 LINK LED 亮起藍燈。（視乎環境不同，可能需時一分鐘。）



左側環境聲揚聲器的背面



- 如果 LINK LED 在一分鐘內沒有變成長亮藍燈，請參考第 6 步以重複第 2 到 5 步（LED 指示燈的狀態）。

### 6. LED 指示燈的狀態

LINK（藍色）亮起：已連接至 Soundbar。

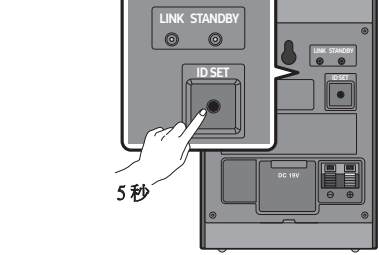
LINK（藍色）快速閃爍（大約 0.5 秒的間隔）：環境聲揚聲器處於 ID SET 模式。

- 確定 Soundbar 已開啟並處於 ID SET 模式。
- 重複第 3 至 5 步。

LINK（藍色）慢速閃爍（大約 1 秒的間隔）：之前已連接到 Soundbar，但目前無法找到它。

- 確定 Soundbar 已開啟。
- 在 Soundbar 開啟時 LINK LED 持續緩慢閃爍。

1. 按住左側環境聲揚聲器背面的 ID SET 按鈕 5 秒以上，直到 LINK LED 開始快速閃爍藍燈。



左側環境聲揚聲器的背面

### 2. 重複第 3 至 5 步。

STANDBY（紅色）亮起：Soundbar 關閉或連接失敗。

- 按照上述 LINK（藍色）慢速閃爍（大約 1 秒的間隔）的說明進行操作。

其他：錯誤

- 聯絡 Samsung 服務中心。

## 03 故障排除

### 環境聲揚聲器沒有聲音

- 如果環境聲揚聲器成功配對並連接至 Soundbar，左側環境聲揚聲器背面的 LINK LED 指示燈將會長亮藍燈。請參考 02. LED 指示燈的狀態，將環境聲揚聲器重新連接至您的 Soundbar。
- 若附近設有傳送無線電頻訊號的裝置，可能會影響連接。請將揚聲器遠離這些裝置。
- 您所播放的內容可能沒有環境聲，只有立體聲。請按遙控器上的 SOUND MODE 按鈕，將聲音模式更改為環境聲。

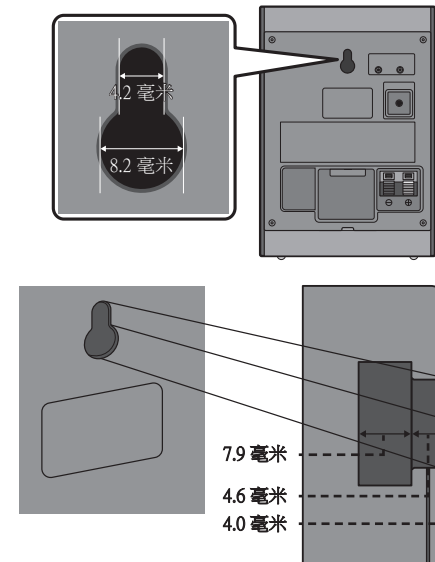
### 環境聲揚聲器的聲音不穩、延遲、有噪音或沒有聲音。

- 如果環境聲揚聲器相距 Soundbar 較遠距離，亦可能會出現聲音不穩、延遲或有噪音的情況。請將它們放近 Soundbar。
- 當 Soundbar 靠近電子裝置時，可能會出現射頻干擾，令聲音不穩或延遲。請將 Soundbar 遠離可能導致無線電干擾的設備（例如無線路由）。請將電視網絡的連接狀態由無線改為有線。

### 環境聲揚聲器的音量可能太低

- 請參考您的 Soundbar 手冊以增加後方揚聲器的音量。（您可以從 [www.samsung.com/support](http://www.samsung.com/support) 下載 Soundbar 的手冊）

## 04 安裝在牆上



- 確保牆壁堅固。如果牆壁薄弱，安裝前請先加固。
- 請注意，切勿將揚聲器打倒或反轉安裝。
- 由於產品安裝不當而導致產品損壞，Samsung Electronics 概不負責。
- Samsung Electronics 並沒有出售掛鉤支架。

## 05 兼容型號

- 與特定 Samsung Soundbar 相容。請瀏覽 Soundbar 產品網頁 [www.samsung.com/support](http://www.samsung.com/support) 了解詳情。
- 兼容型號如有變更，恕不另行通知。