

SAMSUNG

User Manual



VA81-01146L-01
NSPBI01273A-01

SWA-9200S

© 2025 Samsung Electronics Co., Ltd. All rights reserved.

Contact Samsung World Wide

If you have any questions or comments relating to Samsung products, please contact the Samsung customer care centre.

Country/Region	Samsung Service Center ☎	Web Site
UK	0333 000 0333	www.samsung.com/uk/support
IRELAND (EIRE)	0818 717100	www.samsung.com/ie/support

SAFETY INFORMATION

Thank you for purchasing this product (SWA-9200S).

CAUTION	
RISK OF ELECTRIC SHOCK. DO NOT OPEN.	
CAUTION: TO REDUCE THE RISK OF ELECTRIC SHOCK, DO NOT REMOVE THE COVER (OR BACK). NO USER-SERVICEABLE PARTS ARE INSIDE. REFER SERVICING TO QUALIFIED SERVICE PERSONNEL. Refer to the table below for an explanation of symbols which may be on your Samsung product.	
	This symbol indicates that high voltage is present inside. It is dangerous to make any kind of contact with any internal part of this product.
	This symbol indicates that this product has included important literature concerning operation and maintenance.
	Class II product : This symbol indicates that it does not require a safety connection to electrical earth (ground). If this symbol is not present on a product with a power cord, the product MUST have a reliable connection to protective earth (ground).
	AC voltage : This symbol indicates that the rated voltage marked with the symbol is AC voltage.
	DC voltage : This symbol indicates that the rated voltage marked with the symbol is DC voltage.
	Caution, Consult instructions for use : This symbol instructs the user to consult the user manual for further safety related information.

- The slots and openings in the cabinet and in the back or bottom are provided for necessary ventilation. To ensure reliable operation of this apparatus, and to protect it from overheating, these slots and openings must never be blocked or covered.
 - Do not place this apparatus in a confined space, such as a bookcase, or built-in cabinet, unless proper ventilation is provided.
 - Do not place this apparatus near or over a radiator or heat register, or where it is exposed to direct sunlight.
 - Do not place vessels (vases etc.) containing water on this apparatus. A water spill can cause a fire or electric shock.
- Do not expose this apparatus to rain or place it near water (near a bathtub, washbowl, kitchen sink, or laundry tub, in a wet basement, or near a swimming pool, etc.). If this apparatus accidentally gets wet, unplug it and contact an authorized dealer immediately.
- Do not overload wall outlets, extension cords or adaptors beyond their capacity, since this can result in fire or electric shock.
- Route power-supply cords so that they are not likely to be walked on or pinched by items placed on or against them. Pay particular attention to cords at the plug end, at wall outlets, and the point where they exit from the apparatus.
- To protect this apparatus from a lightning storm, or when it is left unattended and unused for long periods of time, unplug it from the wall outlet and disconnect the antenna or cable system. This will prevent damage to the set due to lightning and power line surges.
- Before connecting the AC power cord to the DC adaptor outlet, make sure the voltage designation of the DC adaptor corresponds to the local electrical supply.
- Never insert anything metallic into the open parts of this apparatus. Doing so may create a danger of electric shock.
- To avoid electric shock, never touch the inside of this apparatus. Only a qualified technician should open this apparatus.
- Make sure to plug the power cord in until it is firmly seated. When unplugging the power cord from a wall outlet, always pull on the power cord's plug. Never unplug by pulling on the power cord. Do not touch the power cord with wet hands.
- If this apparatus does not operate normally - in particular, if there are any unusual sounds or smells coming from it - unplug it immediately and contact an authorized dealer or service centre.
- Maintenance of Cabinet.
 - Before connecting other components to this product, be sure to turn them off.

- Be sure to pull the power plug out of the outlet if the product is to remain unused or if you are leaving the house for an extended period of time (especially when children, elderly, or disabled people will be left alone in the house).
 - Accumulated dust can cause an electric shock, an electric leakage, or a fire by causing the power cord to generate sparks and heat or the insulation to deteriorate.
- Contact an authorized service centre for information if you intend to install your product in a location with heavy dust, high or low temperatures, high humidity, chemical substances, or where it will operate 24 hours a day such as in an airport, a train station, etc. Failing to do so may cause serious damage to your product.
- Use only a properly grounded plug and wall outlet.
 - An improper ground may cause electric shock or equipment damage. (Class I Equipment only.)
- To turn this apparatus off completely, you must disconnect it from the wall outlet. Consequently, the wall outlet and power plug must be readily accessible at all times.
- Do not allow children to hang on the product.
- Store the accessories (battery, etc.) in a location safely out of the reach of children.
- Do not install the product in an unstable location such as a shaky self, a slanted floor, or a location exposed to vibration.
- Do not drop or strike the product. If the product is damaged, disconnect the power cord and contact a service centre.
- To clean this apparatus, unplug the power cord from the wall outlet, and then wipe the product using a soft, dry cloth. Do not use any chemicals such as wax, benzene, alcohol, thinners, insecticide, air fresheners, lubricants, or detergent. These chemicals can damage the appearance of the product or erase the printing on the product.
- Do not expose this apparatus to dripping or splashing. Do not put objects filled with liquids, such as vases, on the apparatus.
- Do not plug multiple electric devices into the same wall socket. Overloading a socket can cause it to overheat, resulting in a fire.

WARNING

- TO PREVENT THE SPREAD OF FIRE, KEEP CANDLES AND OTHER ITEMS WITH OPEN FLAMES AWAY FROM THIS PRODUCT AT ALL TIMES.
- To reduce the risk of fire or electric shock, do not expose this appliance to rain or moisture.

Wiring the Main Power Supply Plug (UK Only)


IMPORTANT NOTICE

The mains lead on this equipment is supplied with a moulded plug incorporating a fuse. The value of the fuse is indicated on the pin face of the plug and if it requires replacing, a fuse approved to BS1362 of the same rating must be used.

Never use the plug with the fuse cover removed. If the cover is detachable and a replacement is required, it must be of the same colour as the fuse fitted in the plug. Replacement covers are available from your dealer. If the fitted plug is not suitable for the power points in your house or the cable is not long enough to reach a power point, you should obtain a suitable safety approved extension lead or consult your dealer for assistance. However, if there is no alternative to cutting off the plug, remove the fuse and then safely dispose of the plug. Do not connect the plug to a mains socket as there is a risk of shock hazard from the bared flexible cord. Never attempt to insert bare wires directly into a mains socket. A plug and fuse must be used at all times.

IMPORTANT

The wires in the mains lead are coloured in accordance with the following code:– BLUE = NEUTRAL BROWN = LIVE As these colours may not correspond to the coloured markings identifying the terminals in your plug, proceed as follows:– The wire coloured BLUE must be connected to the terminal marked with the letter N or coloured BLUE or BLACK. The wire coloured BROWN must be connected to the terminal marked with the letter L or coloured BROWN or RED.

WARNING : DO NOT CONNECT EITHER WIRE TO THE EARTH TERMINAL WHICH IS MARKED WITH THE LETTER E OR BY THE EARTH SYMBOL , OR COLOURED GREEN OR GREEN AND YELLOW.

Precautions

- Ensure that the AC or DC power supply in your house complies with the power requirements listed on the identification sticker located on the rear of your product. Install your product horizontally, on a suitable base (furniture), with enough space around it for ventilation (7–10 cm). Make sure the ventilation slots are not covered. Do not place the unit on amplifiers or other equipment which may become hot. This unit is designed for continuous use. To fully turn off the unit, disconnect the AC plug from the wall outlet.
- Do not expose the unit to direct sunlight or other heat sources. This could lead to overheating and cause the unit to malfunction.
- Unplug the Power cord from the AC wall socket if the unit malfunctions. Your product is not intended for industrial use. It is for personal use only. Condensation may occur if your product has been stored in cold temperatures. If transporting the unit during the winter, wait approximately 2 hours until the unit has reached room temperature before using it.

- If the electricity supplied to your home is rated at 240V AC, use a suitable plug adapter to connect this unit to your electrical outlets.

Important Safety Instructions

Read these operating instructions carefully before using the unit. Follow all the safety instructions listed below. Keep these operating instructions handy for future reference.

- Read these instructions.
- Keep these instructions.
- Heed all warnings.
- Follow all instructions.
- Do not use this apparatus near water.
- Clean only with a dry cloth.
- Do not block any ventilation openings. Install in accordance with the manufacturer's instructions.
- Do not install near any heat sources such as radiators, heat registers, stoves, or other apparatus (including AV receivers) that produce heat.
- Do not defeat the safety purpose of the polarized or grounding-type plug. A polarized plug has two blades with one wider than the other. A grounding type plug has two blades and a third grounding prong. The wide blade or the third prong are provided for your safety. If the provided plug does not fit into your outlet, consult an electrician for replacement of the obsolete outlet.
- Protect the power cord from being walked on or pinched particularly at plugs, convenience receptacles, and the point where it exits the apparatus.
- Only use attachments/accessories specified by the manufacturer.
- Use only with the cart, stand, tripod, bracket, or table specified by the manufacturer, or sold with the apparatus. When a cart is used, use caution when moving the cart/apparatus combination to avoid injury from tip-over.
- Unplug this apparatus during lightning storms or when you intend to leave it unused for long periods of time.
- Refer all servicing to qualified service personnel. Servicing is required when the apparatus has been damaged in any way, such as when the power-supply cord or plug is damaged, liquid has been spilled or objects have fallen into the apparatus, the apparatus has been exposed to rain or moisture, does not operate normally, or has been dropped.



01 CHECKING THE COMPONENTS

Surround Speaker X 2 / Speaker Cable / AC/DC Adapter / Power Cord

NOTE

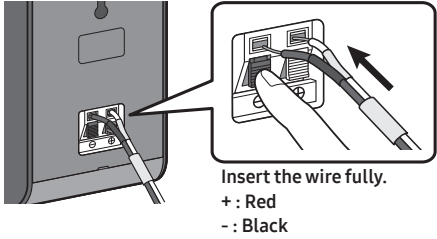
- For more information about the power supply and power consumption, refer to the label attached to the product. (Label: Rear of the Main Unit)
- Design and specifications are subject to change without prior notice.

02 CONNECTING THE SWA-9200S TO A SOUNDBAR

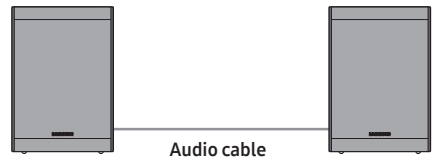
1. Connect the Surround speaker cables

Use the speaker cables to connect the two surround sound speakers.

- When connecting the speaker cable, connect the core wire to the speaker.
- Insert the wire fully, taking care not to insert beyond the wire insulation.



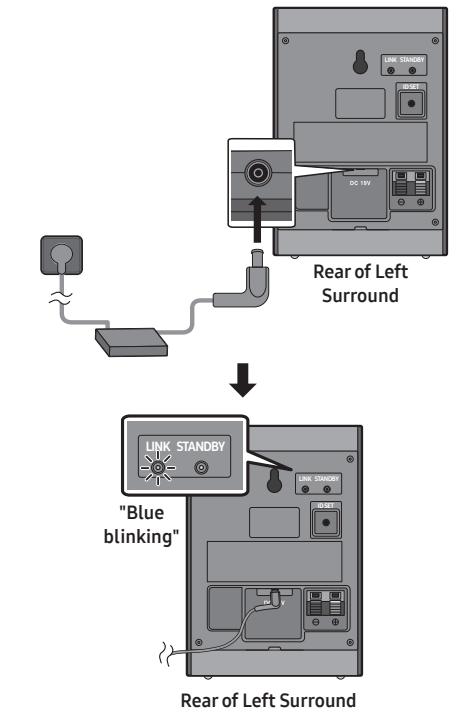
- When connecting the speaker cables to the surround speakers, follow these steps:
 - Insert the red and black colored ends of each speaker cable into the red and black jacks of the appropriate speaker.
 - The labels are on the backs of the speakers.



- The length of the speaker audio cable: 6 m

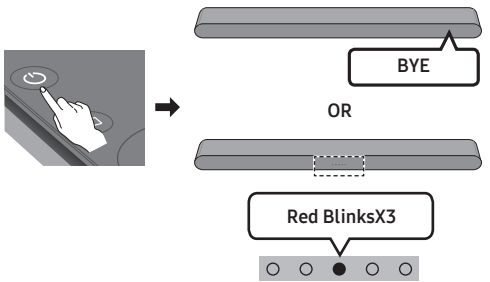
2. Turn on the Surround speakers

Plug the Surround speakers' power cord into an electrical outlet to turn on the Surround speakers. The **LINK** LED indicator (blue LED) on the rear of left surround speaker will blink quickly. If the **LINK** LED does not blink, please see step 6.



3. Turn off the Soundbar

If the Soundbar is turned on, please turn off the Soundbar by pressing the **Power** button on the Soundbar or remote control.

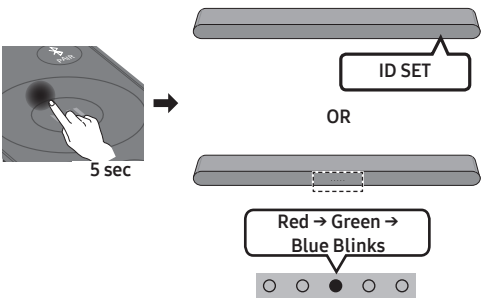


- The image of the Soundbar may differ from your Soundbar, depending on the model.

4. Connect Soundbar and Surround Speakers

Press the **Up** button on the remote control for more than 5 seconds until the **"ID SET"** message appears on the Soundbar's display. The message will disappear shortly. (If your Soundbar does not have a display window and only LED indicators, please refer to the LED information below.)

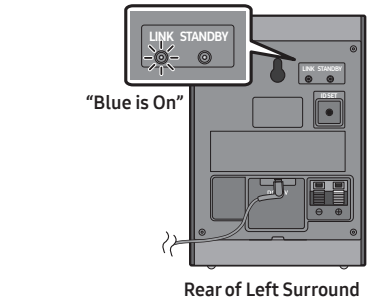
- After the **ID SET** process is successful, the Soundbar will turn on automatically.



- The image of the Soundbar may differ from your Soundbar, depending on the model.

5. Check the connection complete

The **LINK** LED stops blinking and changes to solid blue when the Soundbar and surround speakers are successfully linked. Please turn off the Soundbar and turn it back on. Confirm that the **LINK** LED is blue. (It may take a minute depending on the environment.)



- If the **LINK** LED does not turn to solid blue in a minute, please repeat from step 2 through 5 referring to step 6 (**LED indicator's status**).

6. LED Indicator's status

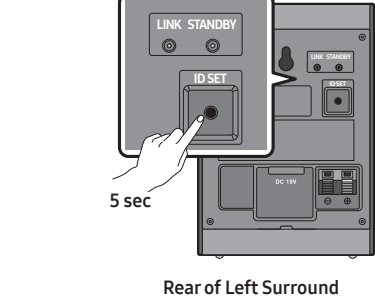
LINK (Blue) On : Connected with the Soundbar.

LINK (Blue) Blinking fast (at an interval of around 0.5 second) : Surround speakers are in **ID SET** mode.

- Check if the Soundbar is turned on and in **ID SET** mode.
- Repeat steps 3 through 5.

LINK (Blue) Blinking slow (at an interval of around 1 second) : Previously connected to a Soundbar but cannot currently find it.

- Check if the Soundbar is turned on.
- If the **LINK** LED keeps blinking slowly even when the Soundbar is turned on,
 - Press the **ID SET** button on the rear of the left surround for more than 5 seconds until the **LINK** LED starts blinking fast in blue.



2. Repeat steps 3 through 5.

STANDBY (Red) On : When the Soundbar turns off or connection has failed.

- Follow the instructions for **"Link (Blue) Blinking slow (at an interval of around 1 second)"** above.

Others : Errors

- Contact a Samsung Service Centre.

03 TROUBLE SHOOTING

There is no sound from Surround Speakers

- If the Surround speakers are successfully paired and connected to a Soundbar, the **LINK** LED indicator on the rear of the Left Surround is on and solid blue. Please reconnect the Surround speakers to your Soundbar referring to **02-6, LED Indicator's status**.
- Other devices sending radio frequency signals in proximity may interrupt the connection. Please keep your speaker away from such devices.
- The content you are playing may have no surround track but only stereo. Please change the sound mode to Surround by pressing **SOUND MODE** button on the remote control.

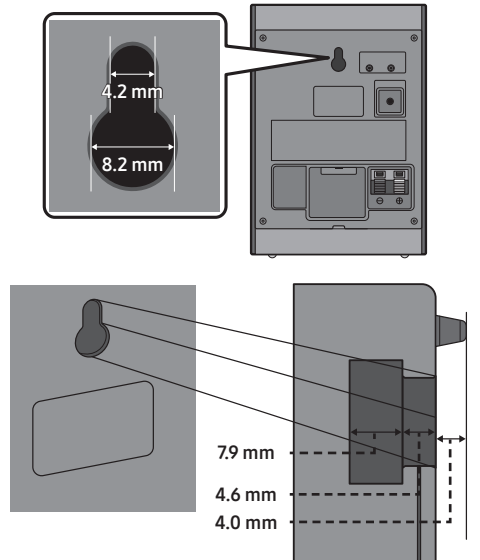
There is sound jitter, delays, noise or dropout from the sound of Surround Speakers.

- There may be sound jitter or delays when the Surround Speakers are far from the Soundbar. Please place them near the Soundbar.
- There may be sound jitter or delays when the Soundbar is near an electrical device that can cause radio interference. Please place the Soundbar far from such devices that can cause radio interference (e.g. wireless router).
- Please change the TV network connection status from wireless to wired.

The volume of Surround Speakers is too low

- Please increase the rear level referring to the manual of your Soundbar. (You can download the manual of your Soundbar from www.samsung.com/support)

04 MOUNTING ON A WALL



- Be sure the wall is stable. If the wall is weak, reinforce it before installation.
- Take care not to install the speakers sideways or upside down.
- Samsung Electronics is not liable for any damage to the product due to improper installation.
- Wall mounts aren't sold by Samsung Electronics.

05 COMPATIBLE MODELS

- Compatible with select Samsung Soundbar. Please visit the Soundbar product page at www.samsung.com/support for more information.
- Compatible model list is subject to change without further notice.

06 OPEN SOURCE LICENSE NOTICE

To send inquiries and requests for questions regarding open sources, contact Samsung Open Source (<http://opensource.samsung.com>)

07 IMPORTANT NOTES ABOUT SERVICE

- An administration fee may be charged if either
 - an engineer is called out at your request and there is no defect with the product (i.e. where the user manual has not been read).
 - you bring the unit to a repair centre and there is no defect with the product (i.e. where the user manual has not been read).
- You will be informed of the administration fee amount before a technician visits.

08 SPECIFICATIONS AND GUIDE

Specifications

Subwoofer Name SWA-9200S (LEFT/RIGHT)	
Weight 1.7 kg	Dimensions (W x H x D) 105.0 x 152.8 x 109.0 mm
Operating Temperature Range 10 °C to 40 °C	Operating Humidity Range 10 % ~ 80 %, non-condensing
AMPLIFIER Rated Output power 60 W x 2	
Overall Standby Power Consumption (W) 0.5 W	
WIRELESS DEVICE OUTPUT POWER SRD max transmitter power 25mW at 5.725GHz ~ 5.825GHz	

NOTE

- Samsung Electronics Co., Ltd reserves the right to change the specifications without notice.
- Weight and dimensions are approximate.

- Please visit www.samsung.com/global/ecodesign_energy to find further information about off mode, standby mode, and networked standby mode associated with EU standby ecodesign regulation.
- Hereby, Samsung declares that this radio equipment is in compliance with Directive 2014/53/EU and the relevant UK statutory requirements. The full text of the declaration of conformity is available at the following internet address: <http://www.samsung.com> go to Support and enter the model name. This equipment may be operated in all EU countries and in the UK.



Correct Disposal of This Product
(Waste Electrical & Electronic Equipment)

(Applicable in countries with separate collection systems)

This marking on the product, accessories or literature indicates that the product and its electronic accessories (e.g. charger, headset, USB cable) should not be disposed of with other household waste at the end of their working life. To prevent possible harm to the environment or human health from uncontrolled waste disposal, please separate these items from other types of waste and recycle them responsibly to promote the sustainable reuse of material resources. Household users should contact either the retailer where they purchased this product, or their local government office, for details of where and how they can take these items for environmentally safe recycling. Business users should contact their supplier and check the terms and conditions of the purchase contract. This product and its electronic accessories should not be mixed with other commercial wastes for disposal.

For information on Samsung's environmental commitments and product specific regulatory obligations e.g. REACH, WEEE, Batteries, visit: www.samsung.com/uk/aboutsamsung/sustainability/environment/our-commitment/data/



UNITED KINGDOM

This Samsung product is warranted for the period of twelve (12) months from the original date of purchase, against defective materials and workmanship. In the event that warranty service is required, you should return the product to the retailer from whom it was purchased. However, Samsung Authorised Dealers and Authorised Service Centres in other EC Countries will comply with the warranty on the terms issued to purchasers in the country concerned. In case of difficulty, details of our Authorised Service Centres are available from:

Samsung Electronics U.K. Ltd
Samsung Customer Support Centre
Selectapost 38, Sheffield, S97 3FJ
United Kingdom

United Kingdom
Tel : 0333 000 0333
www.samsung.com/uk/support

EIRE
Tel : 0818 717100
www.samsung.com/ie/support

■ WARRANTY CONDITIONS

- The warranty is only valid if, when warranty service is required, the warranty card is fully and properly completed and is presented with the original invoice or sales slip or confirmation, and the serial number on the product has not been defaced.
- Samsung's obligations are limited to the repair or, at its discretion, replacement of the product or the defective part. Repaired or replaced products may include new and/or refurbished components and equipment.
- Warranty repairs must be carried out by Authorised Samsung Dealers or Authorised Service Centres. No re-imbursement will be made for repairs carried out by non Samsung Dealers and, any such repair work and damage to the products caused by such repair work will not be covered by this warranty.



EIRE

- This product is not considered to be defective in materials nor workmanship by reason that it requires adaptation in order to conform to national or local technical or safety standards in force in any Country other than the one for which the product was originally designed and manufactured. This warranty will not cover, and no re-imbursement will be made for such adaptation nor any damage which may result.
- This warranty covers none of the following:
 - Periodic check ups, maintenance and repair or replacement of parts due to normal wear and tear.
 - Cost relating to transport, removal or installation of the product.
 - Misuse, including the failure to use this product for its normal purposes or incorrect installation.
 - Damage caused by Lightning, Water, Fire, Acts of God, War, Public Disturbances, incorrect mains voltage, improper ventilation or any other cause beyond the control of Samsung.
- This warranty is valid for any person who legally acquired possession of the product during the warranty period.
- The consumers' statutory rights in any applicable national legislation whether against the retailer arising from the purchase contract or otherwise are not affected by this warranty. Unless there is national legislation to the contrary, the rights under this warranty are the consumers' sole rights and Samsung, its subsidiaries and distributors shall not be liable for indirect or consequential loss or any damage to disc based media, removable memory or any other related equipment or material.
- Samsung shall honour warranties for all EU specification products purchased by a consumer within the following European countries listed.
 - UK, Republic of Ireland, Germany, France, Italy, Malta, Spain, Portugal, The Netherlands, Belgium, Luxembourg, Denmark, Sweden, Finland, Poland, Hungary, Czech Republic, Slovakia, Austria, Slovenia, Croatia, Estonia, Latvia, Lithuania, Greece, Cyprus, Romania, Bulgaria, Switzerland, Norway, Lichtenstein and Iceland.

SAMSUNG ELECTRONICS (U.K.) LTD.