



TVM 5440 Series

TVM 5640 Series

TVM 5840 Series

Full Installation Guide

Everything you need to get your TV safely on the wall, in no time
Before you start

...we just wanted to say thanks for choosing Vogel's. Smart choice.

And you're already making another smart choice – reading the manual! Keep reading to learn all about safe, efficient installation, and how to use your new mount.

Stay safe



Warning

Always read these safety instructions carefully before installing and using this product.

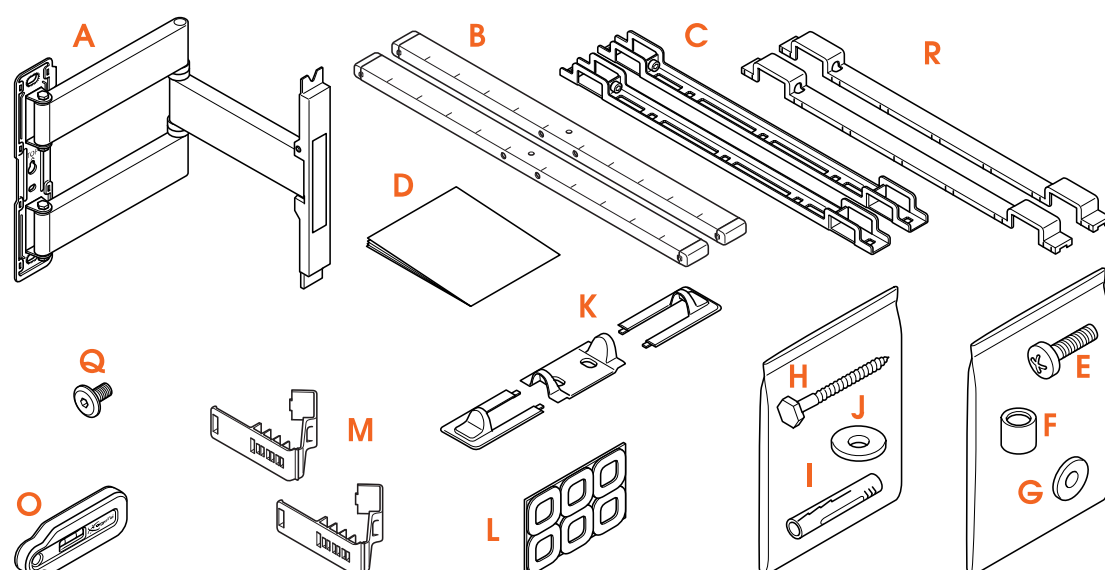
Following these instructions is strictly required. Incorrect mounting and/or installation could put you, your TV, and your family at substantial risk.

Don't dare risk it... Read all

- Vogel's recommends that the mounting and/or installation of this product should be carried out by a suitably qualified expert.
- Vogel's cannot be held responsible for any injury and/or damage caused by incorrect installation.
- Please consult the manual for your TV and ensure that the weight and size of the TV is within the maximum weight and size limits specified for this product, and that the TV mounting bolts used are of a suitable length and diameter. Note that not all the TV mounting accessories provided are required for the installation of any one TV.

- The wall mounting accessories provided are exclusively intended for installation on walls made of solid brick, solid concrete or solid wood columns. Surfaces should be flat and level.
- Any material covering the wall must not exceed 3mm/ 0.12 inch.
- For mounting on walls made of other materials, such as hollow bricks, wood panels or plasterboard, please consult your installer and/or specialist supplier.
- Clean the product with a dry, lint-free cloth. Do not use detergents or other solvents to clean the product.
- Only qualified, certified personnel may repair the product. Use only original spare parts. The use of other parts will result in voiding the warranty, and could lead to injuries.
- Alterations to the product and technical modifications are not permitted. This will void the warranty, and could lead to injuries.
- Always store the product in a dry and safe place with a temperature between -10°C to +50°C.
- Handle and transport the product with care.
- Repack the product when transporting or not using it for a longer period of time.
- Lifting your TV is a two-person job. Don't be bold!

What's in your box?



- Something missing? Make sure your packaging has everything in place:
 - A. Wall mount
 - B. Horizontal bars
 - C. Vertical strips
 - D. Safety instructions
 - E. Bolts for fastening strips on TV (see contents below)
 - F. Spacers
 - G. Washers Ø 18mm
 - H. Screws
 - I. Plugs (fischer® DuoPower)
 - J. Washers Ø 26mm
 - K. Covers
 - L. Protective TV patches

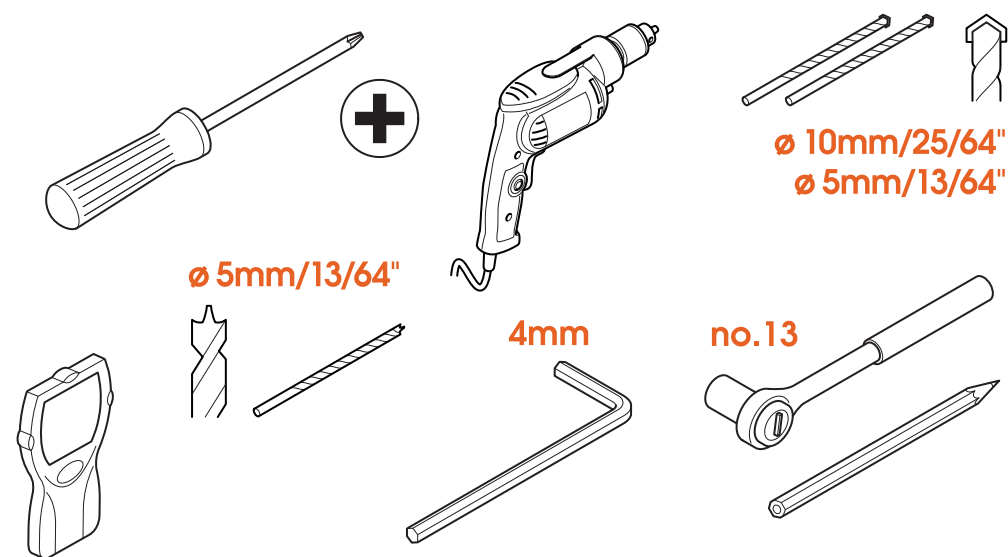
- M. Cable fingers
- O. Spirit level
- Q. Interface bolts
- R. Strip covers

- Contents of the TV fasteners kit:
 - 4x M6*12mm bolts
 - 4x M6*25mm bolts
 - 4x M6*35mm bolts
 - 4x M8*12mm bolts
 - 4x M8*25mm bolts
 - 4x M8*45mm bolts
 - 4x M6 washer
 - 4x spacer 10mm
 - 4x spacer 5mm



You don't need all fasteners to mount your TV. Store the rest for later or other use!

Got your tools ready?



- Don't start without all the necessary tools:
 - Large crosshead screwdriver
 - Drilling machine
 - 10mm or 25/64" concrete / brick drill (for concrete / brick walls only)
 - 5mm or 13/64" concrete / brick drill (for concrete / brick walls only)
 - 5mm or 13/64" wood drill (for walls with wooden studs only)
 - Stud finder (for walls with wooden studs only)
 - Socket wrench no. 13
 - Pencil

- M4 (4mm) Allen key

Take care of your safety



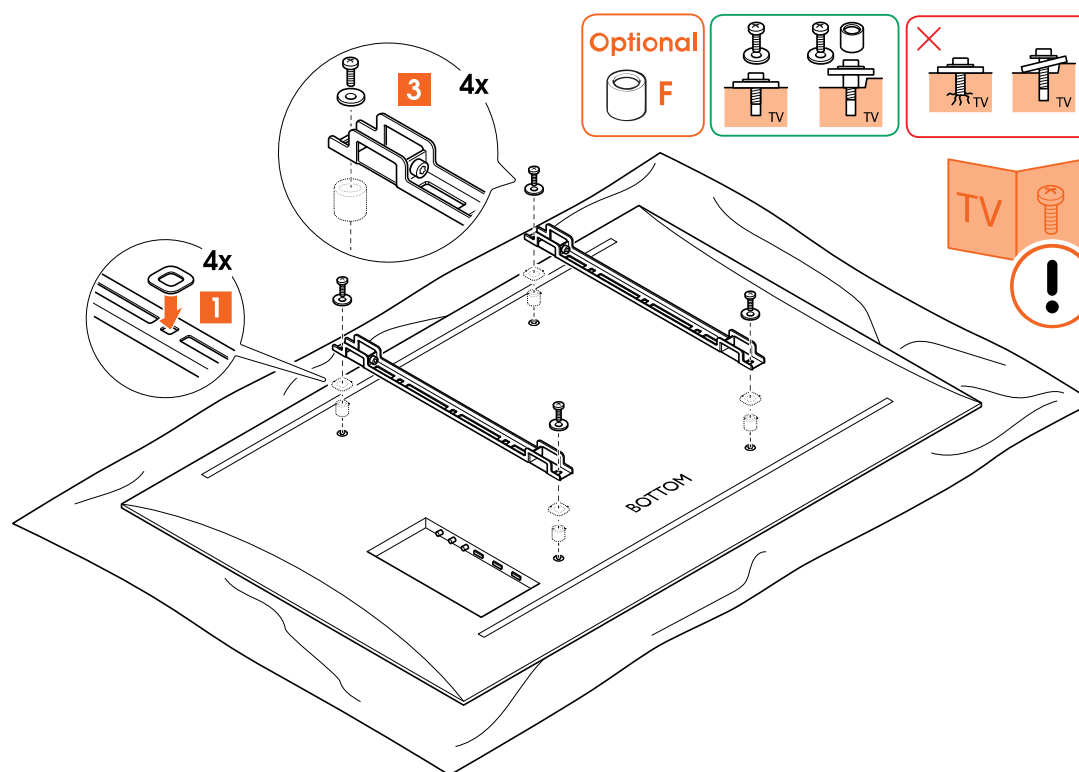
- Who cares about looking cool? Always wear personal protective equipment:
 - Eye protection
 - Ear protection
 - Safety shoes



Lifting your TV is a two-person job. Don't be bold!

Ready, set, get installing!

Step 1: Attach the strips to the TV



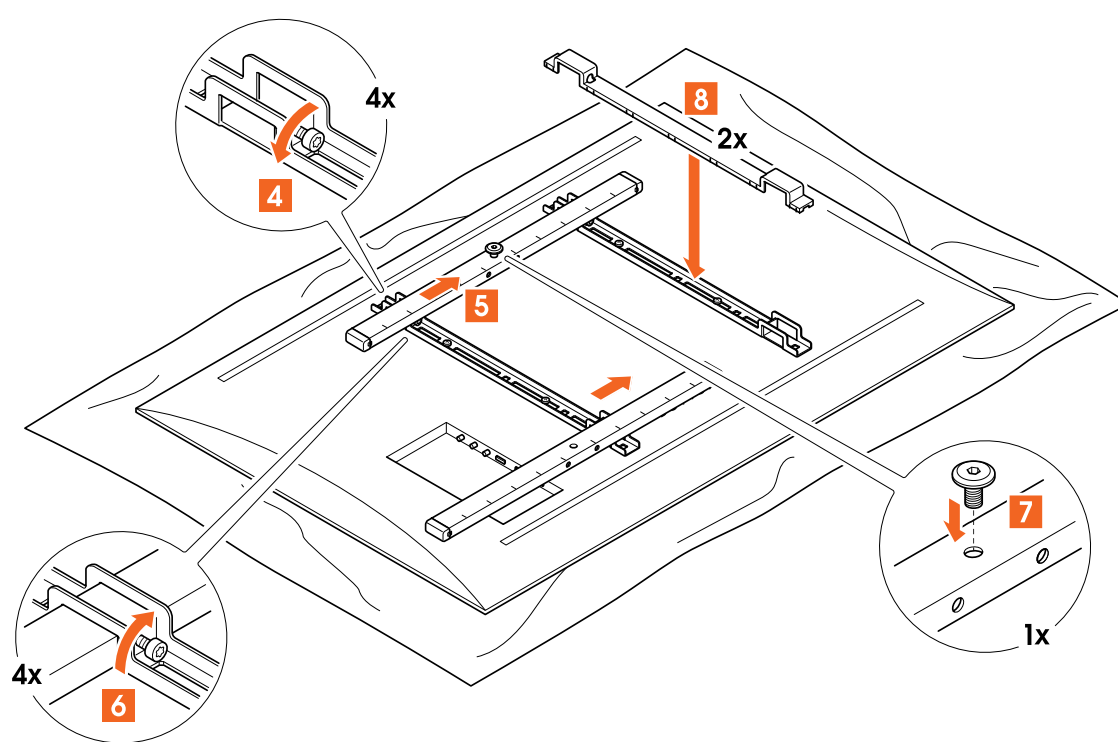
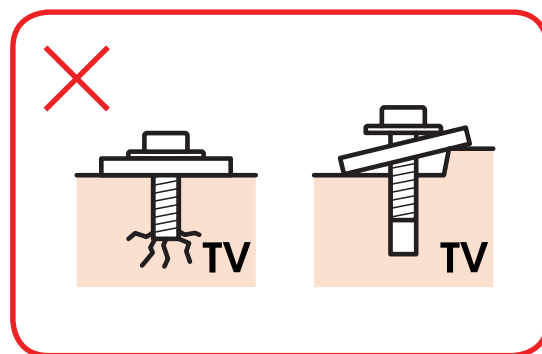
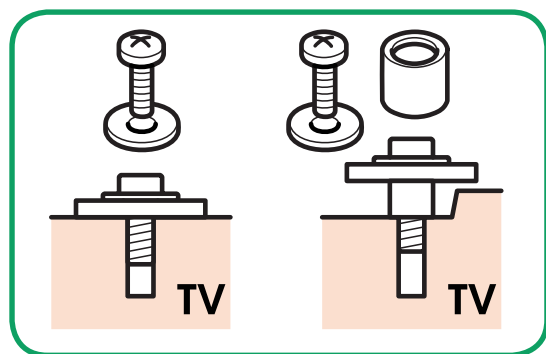
1. Put the **protective TV patches** ① on the **interface strips** ②.
2. Carefully place the TV face down, on a soft clean surface without any obstacles.
3. Screw the **interface strips** ② on to the TV with the **bolts** ③. Make sure the **interface strips** ② are at the same height and do not stick out. Washers are not necessary for M8 bolts.



Are you missing any bolts? Or need different ones? The friendly team at Vogel's Consumer Care are waiting to help: [vogels.com/contact](http://www.vogels.com/contact) (<http://www.vogels.com/contact>).



Refer to the user manual of your TV for the correct mounting material. Make sure bolts and spacers are positioned correctly.



4. Loosen the pre-attached bolts in the **vertical strips** © with an allen key.
5. Slide the **horizontal bars** ® through the **vertical strips** © and center them.
6. Tighten the bolts in the **vertical strips** © and check if the **horizontal bars** ® stay in place.
7. Attach the **strip covers** ®.
8. Put the **interface bolt** © in the upper interface bar. Make sure you don't screw it in completely, yet.

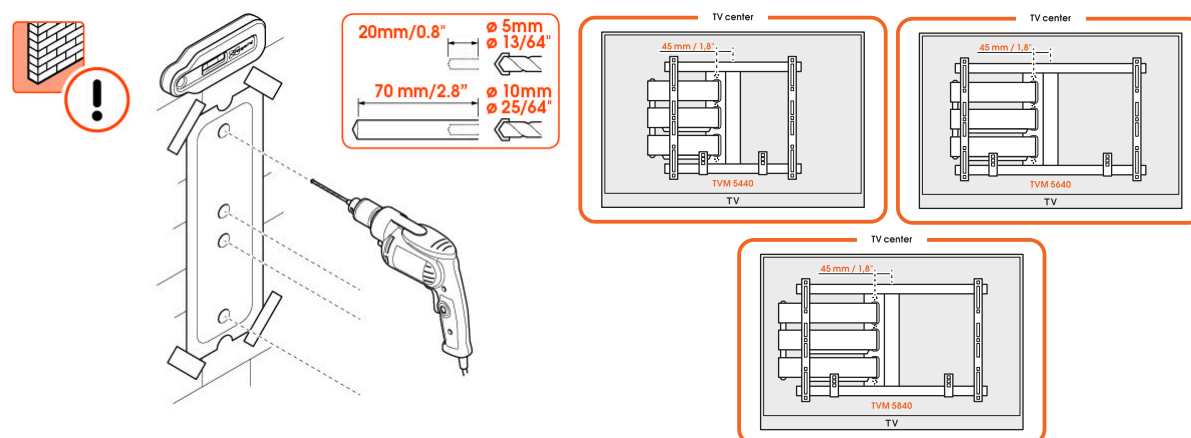
Step 2: Attach the wall mount to the wall

How well do you know your walls? What they're made of matters more than you think...

Solid concrete / brick wall



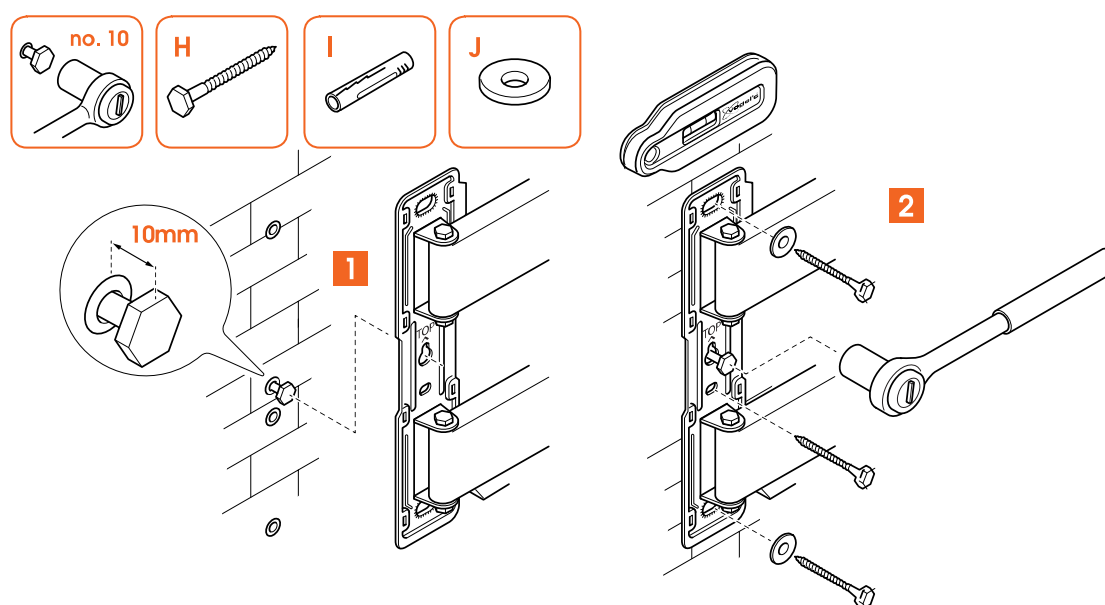
Don't drill yet! The center of the wall plate is not where the center of your TV will be. Try our free [DrillRight app](https://www.vogels.com/DrillRight) (<https://www.vogels.com/DrillRight>) to find just the right location and mark the first hole, easily.



1. Find the perfect spot for drilling with our [DrillRight app](https://www.vogels.com/DrillRight) (<https://www.vogels.com/DrillRight>) and the included drilling template.
2. Drill the holes. Pre-drill with a smaller drill to avoid damage to the wall.



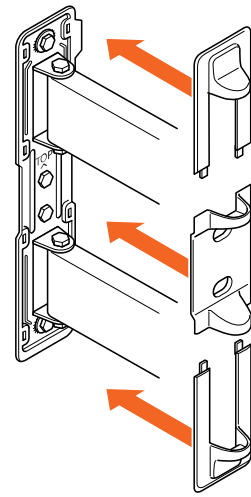
How deep do you drill? Check if the entire **screw** (except its head) fits in the hole before placing the plugs. This stops things from breaking. Vacuum the hole after drilling.



3. Attach the **wall mount** (A) to the wall with the **screws** (H), **washers** (J) and **plugs** (I). Use the **spirit level** (C) to level the wall mount. Make sure that you insert the centre screw into the wall first.

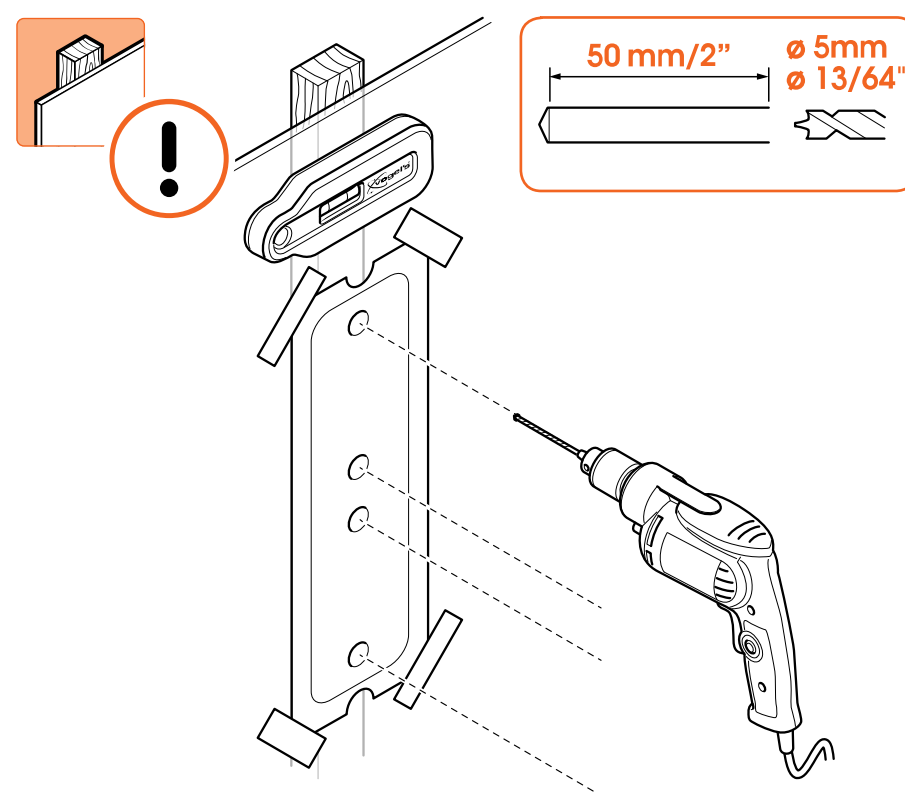


Lubricate the screws for easy screwing in.



4. Click the **covers** ⓘ into place. Simple!

Walls with wooden studs

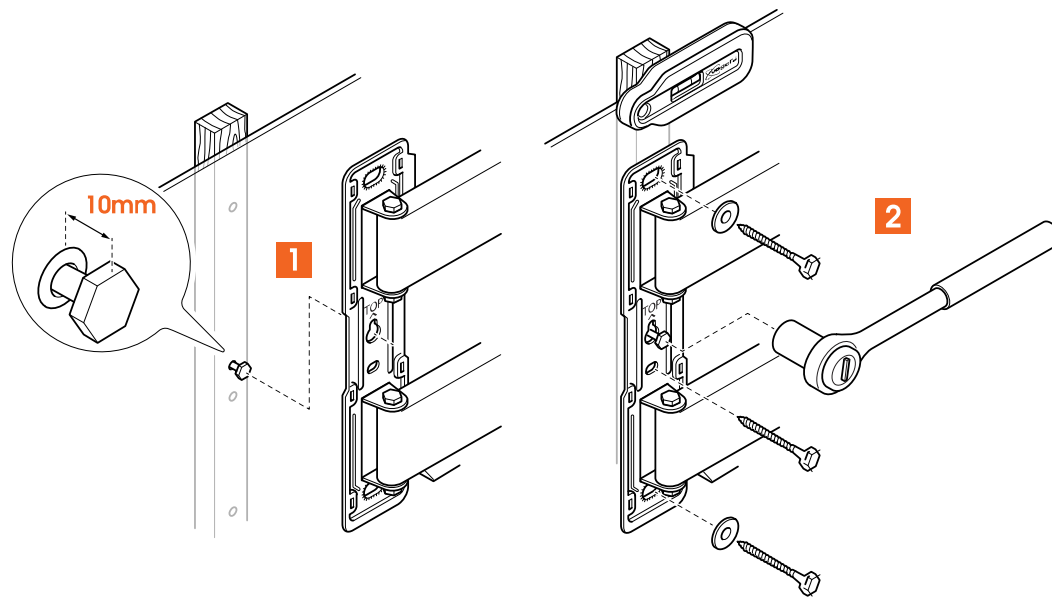


1. Don't just guess! Always use a **stud finder** to determine the position of studs.
2. Find the perfect spot for drilling by positioning the holes marked on the drilling template horizontally centered on a stud.
3. If you'd prefer to mount the TV mount in between studs, please check out our [stud adapter](https://www.vogels.com/catalog/product/view/id/5016) (<https://www.vogels.com/catalog/product/view/id/5016>).



Don't destroy your belongings! The wall mount must always be attached to the studs.

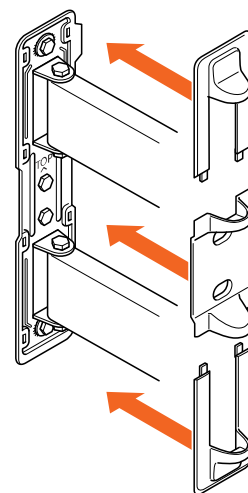
4. Now for the fun part... drilling the holes.



5. Attach the **wall mount** ① to the wooden studs with the **screws** ② and **washers** ③. Use the **spirit level** ④ to level the wall mount. Make sure that you insert the centre screw into the wall first.



Lubricate the screws for easy screwing in.



6. Click the **covers** ⑤ into place. Simple!

Other wall type / I don't know my wall type

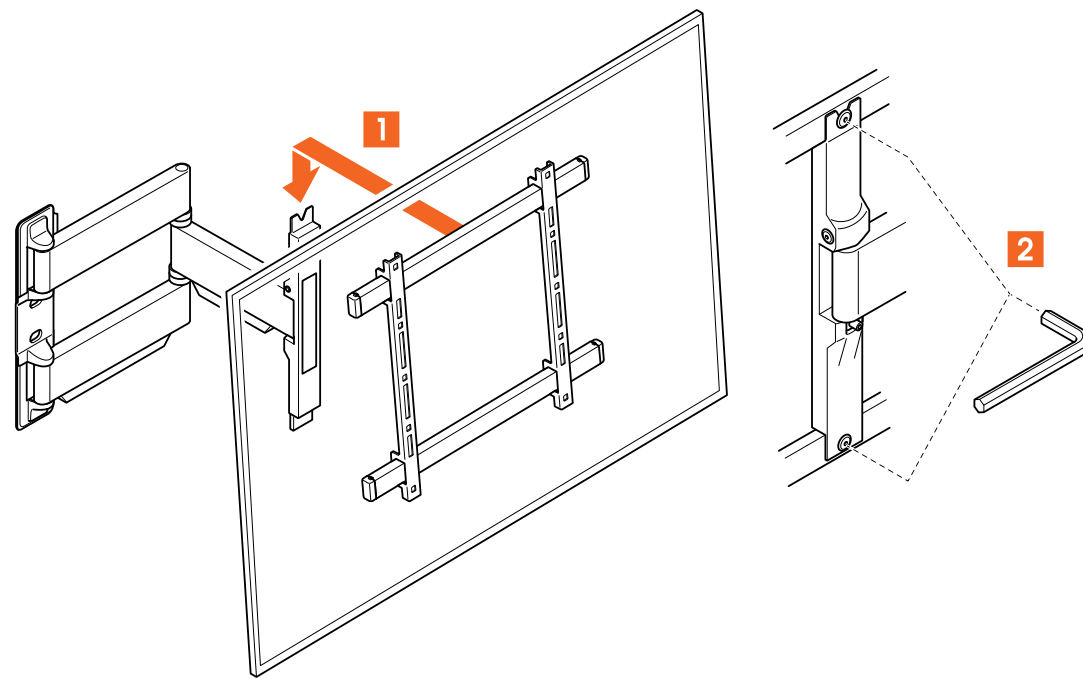


If your wall is a little special – for example, hollow bricks, metal stud walls, wood panels or plasterboard – visit [information for different wall types](https://www.vogels.com/en/c/tv/tv-on-the-wall) (<https://www.vogels.com/en/c/tv/tv-on-the-wall>).

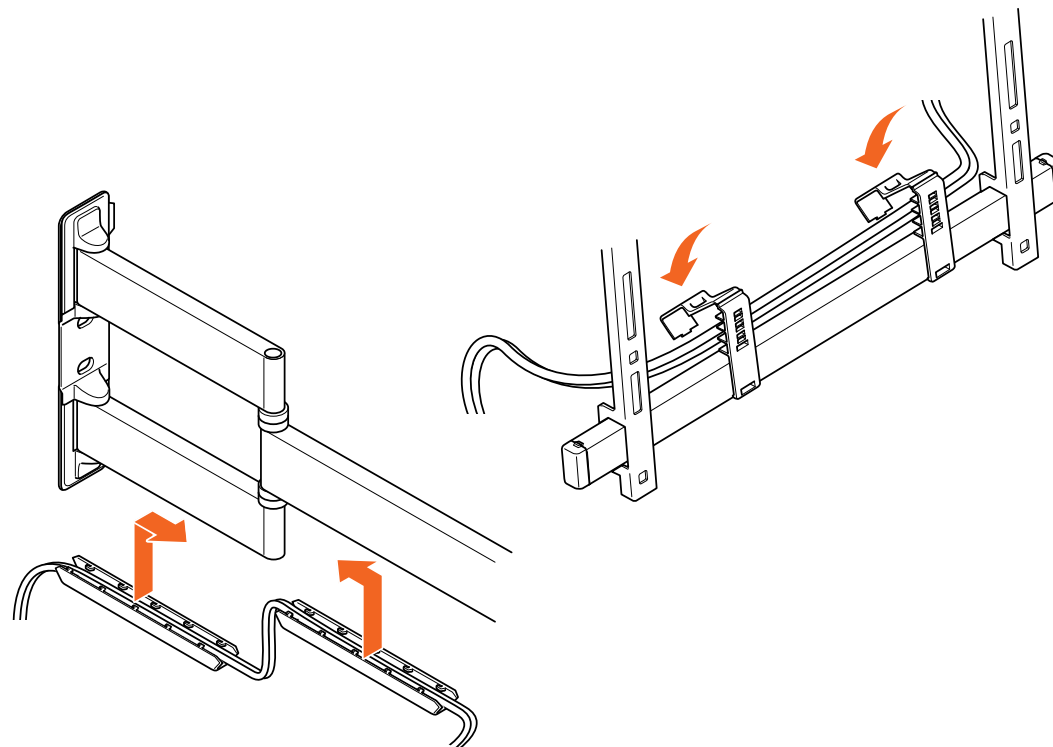
If you aren't sure, don't worry! Just ask your installer, specialist supplier or the Vogel's Consumer Care team at www.vogels.com/contact (<http://www.vogels.com/contact>).

Step 3: Attach the TV to the wall mount

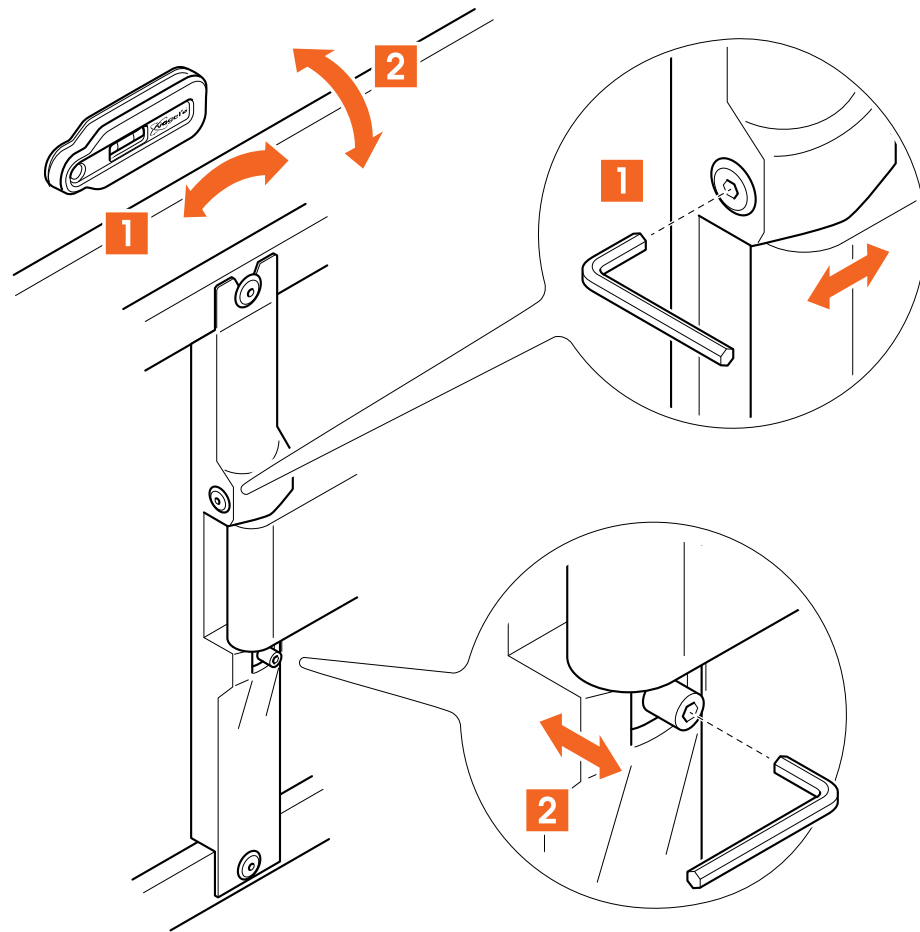
Step 2: Attach the TV to the wall mount



1. Carefully lift and attach the TV onto the interface bracket on the **wall mount** ①.
2. Tighten the upper interface bolt and place the bottom interface bolt.



3. Remove the cable arm covers from the arm by sliding them, then pulling them out.
4. Guide the cables through the cable arm covers. Put the covers into the arms, and slide into a locked position. Make sure your cables have enough slack for the TV mount to rotate in all directions. Carefully check if the cables do not obstruct the movement of the hinges.
5. Additionally guide the cables behind the TV with the cable fingers.



6. Make sure the TV is levelled by using the spirit level. Level the TV while it's parallel with the wall and put the spirit level on top of the TV.

7. When you have the correct position, tighten the bolts.

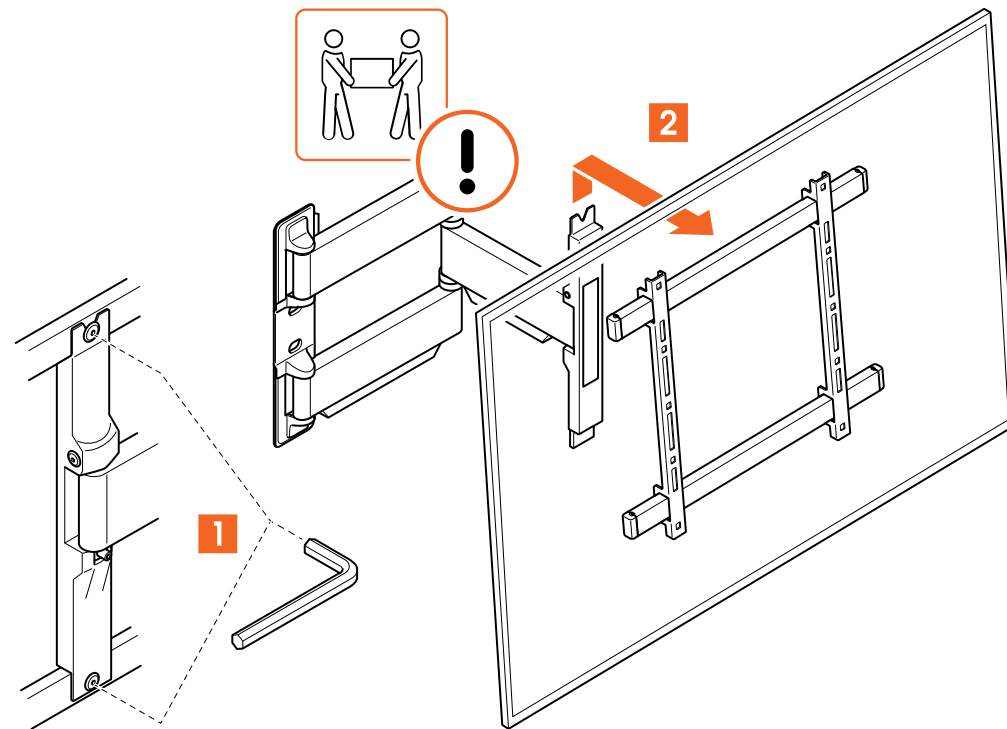
Job done now! Enjoy watching your TV!

Handy features



Having a cable mess? Do you need inspiration about how to hide and guide your cables or how to place other TV accessories? Take a look at our website [vogels.com](https://www.vogels.com/) (<https://www.vogels.com/>)!

Removing your TV



1. Remove the bottom interface bolt and loosen the upper interface bolt.
2. Unplug the cables from your TV.
3. Lift your TV off of the interface bracket, and put it down somewhere safe.



Again, lifting your TV is a two-person job. Always get help.

Confused? Unsure? Going crazy?

There's plenty of help waiting for you, online:



info@vogels.com (<mailto:info@vogels.com>)
www.vogels.com/contact (<http://www.vogels.com/contact>)



[facebook.com/VogelsForSure/](https://www.facebook.com/VogelsForSure/) (<https://www.facebook.com/VogelsForSure/>)



[instagram.com/vogels_official/](https://www.instagram.com/vogels_official/) (https://www.instagram.com/vogels_official/)



www.youtube.com/c/VogelsForSure (<https://www.youtube.com/c/VogelsForSure>)

Simple troubleshooting

Found a problem you can't fix? Don't panic... try these!

Problem

'I have a lot of leftover bolts, is something wrong?'

Cause

No, you did it very well! You only need 4 bolts to install the mount to your TV. Because of all the different types of TVs, we have included the most common sizes for the most sold TVs.

Solution

Don't waste the other bolts, save them!

You can use them for another TV when you buy a new one or use it elsewhere.

Problem

'My wall screws have snapped!'

Cause

You might not be drilling deep enough... or your drill could be too blunt, so that the hole is too narrow and the screw gets stuck.

Solution

Use another hole in the wall plate to fix the wall mount to the wall. Make sure you use a sharp drill of the correct size. Vacuum the hole after drilling. Check if the entire **screw** (except its head) fits in the hole before placing the plugs.

Problem

'My cover is stuck!'

Cause

If the space between your wall and your wall mount is a little too tight, things can get tricky to reach.

Solution

Push a small screwdriver between wall and wall mount to push the snap hooks down to release.

FAQs

'Where can I request the correct bolts for my TV (a service kit)?'

Whatever you need, simply contact your local Vogel's dealer or Vogel's. [Click here \(http://www.vogels.com/contact\)](http://www.vogels.com/contact) to contact Vogel's Consumer Care.

'Where can I find installation videos?'

Click or tap the button on the front page of this manual. The installation video can be found at the product page of your product on our website. It can also be found on our YouTube channel: www.youtube.com/c/VogelsForSure (<http://www.youtube.com/c/VogelsForSure>).

'What if I need spare parts?'

You can buy some spare parts on our webshop. Please visit the service kits/spare parts page from the bottom menu on our website (<https://www.vogels.com/>) or enter the product type number in the search bar. If you require a different part or if a part is missing, please contact your local dealer or Vogel's Consumer Care (<http://www.vogels.com/contact>).

'Where can I find the drilling template?'

The drilling template is printed on the inlay card in the box. You can cut it out for your convenience.

'How high do I need to hang my TV?'

The center of your TV should ideally be positioned at eye level, while seated. When a wall mount with tilt function is used, your TV can be mounted above eye level. Download and use the free DrillRight app (<https://www.vogels.com/DrillRight>) to determine the height of the TV and to mark the first hole.

If you cannot use the app or want to calculate the height, please see our instructions for manual positioning (<https://downloads.vogels.com/en/FAQ-drillrightapp-2024.pdf>) (available online in English only, available upon request in French, German and Dutch).

'I'm stuck in the DrillRight app, what should I do?'

Please check out our Frequently Asked Questions about the DrillRight app (<https://downloads.vogels.com/en/FAQ-drillrightapp-2024.pdf>) (available in English only).

'Which bolts or screws do I need to use?'

Vogel's offers a complete assembly kit with all mounting materials included in the box, for both your TV and wall. Do you miss the correct bolts for your TV? Please contact your local Vogel's dealer. Click here (<http://www.vogels.com/contact>) to contact Vogel's Consumer Care.

'Why do you use Fischer® plugs?'

The Fischer® DuoPower plug is widely regarded as the best standard in plugs. Don't settle for less!

'What is VESA?'

VESA is a standard pattern of mounting location holes on the back of a TV which allows many standard TV mounts to be easily fitted to your TV.

Go green!

We care about the planet. If you're getting rid of the packaging or the TV mount itself, please check your municipality's guidelines for the best disposal options near you. For information about the materials used in the packaging, visit www.vogels.com/recycle (<https://www.vogels.com/recycle>). Recycling matters!



Guarantee



Thanks again for choosing Vogel's! Durability is paramount in the development and production of our products. For this reason, we are able to provide a product guarantee for the reasonable service life of all of our wall mounts. We provide a guarantee of 15 years, unless local statutory law and regulation dictate a longer minimum period. We resolve any issues regarding product complaints or returned products and assess all complaints based on usage.

If your product is not functioning properly due to material faults or manufacturing defects, we will repair it free of charge or replace it at our own discretion.

If you have any problems with our product or want to know whether the guarantee is applicable, please:

1. Complete the contact form or mail our Consumer Care Team. Preferably, please add a picture.
2. Within 2 business days you will be contacted by our local Vogel's distributor.
3. If the guarantee is invoked, the product should be returned, together with the original purchase document (invoice, sales slip or cash receipt). The purchase document should clearly show the name of the supplier and the date of purchase. You will be informed about the specific return address and further procedure.

Vogel's guarantee shall lapse in the following cases:

- If the product has not been installed or used in accordance with the instructions;
- If applicable, if the holes in the wall have not been properly drilled in accordance with the Vogel's installation instructions for the applicable wall type;
- If the product has been altered or repaired by someone other than Vogel's;
- If a fault arises due to external causes (outside the product) such as for example lightning, water nuisance, fire, scuffing, exposure to extreme temperatures, weather conditions, solvents or acids, wrong use or negligence;
- If the product is used for different equipment than is mentioned on or in the packaging.

Do you have any other questions? Please make use of our contact form.