



TVM 7655 Series

Full Installation Guide

Everything you need to get your TV safely on the wall, in no time

Before you start

...we just wanted to say thanks for choosing Vogel's. Smart choice.

And you're already making another smart choice – reading the manual! Keep reading to learn all about safe, efficient installation, and how to use your new mount.

Stay safe



Warning

Always read these safety instructions carefully before installing and using this product.

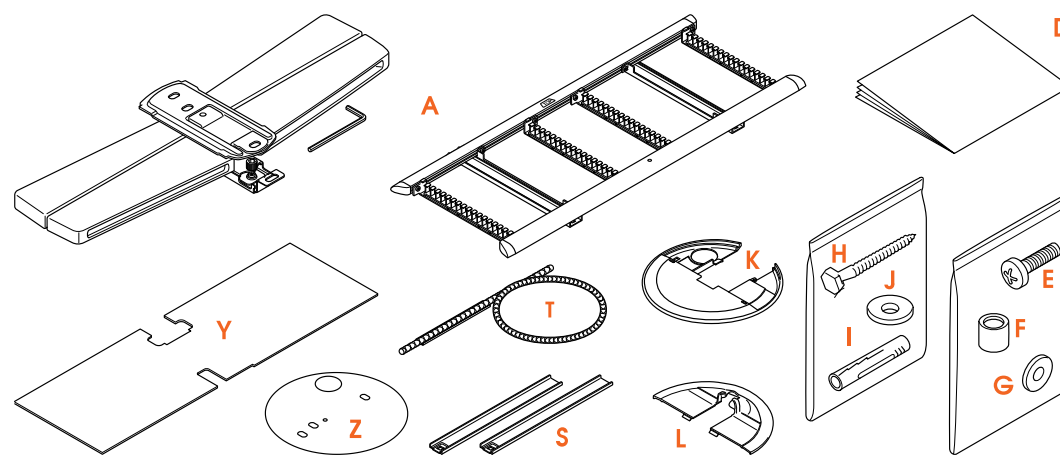
Following these instructions is strictly required. Incorrect mounting and/or installation could put you, your TV, and your family at substantial risk.

Don't dare risk it... Read all

- Vogel's recommends that the mounting and/or installation of this product should be carried out by a suitably qualified expert.
- Vogel's cannot be held responsible for any injury and/or damage caused by incorrect installation.
- Please consult the manual for your TV and ensure that the weight and size of the TV is within the maximum weight and size limits specified for this product, and that the TV mounting bolts used are of a suitable length and diameter. Note that not all the TV mounting accessories provided are required for the installation of any one TV.
- The wall mounting accessories provided are exclusively intended for installation on walls made of solid brick, solid concrete or solid wood columns. Surfaces should be flat and level.
- Any material covering the wall must not exceed 3mm/ 0.12 inch.
- For mounting on walls made of other materials, such as hollow bricks, wood panels or plasterboard, please consult your installer and/or specialist supplier.

- Clean the product with a dry, lint-free cloth. Do not use detergents or other solvents to clean the product.
- Only qualified, certified personnel may repair the product. Use only original spare parts. The use of other parts will result in voiding the warranty, and could lead to injuries.
- Alterations to the product and technical modifications are not permitted. This will void the warranty, and could lead to injuries.
- Always store the product in a dry and safe place with a temperature between -10°C to +50°C.
- Handle and transport the product with care.
- Repack the product when transporting or not using it for a longer period of time.
- Lifting your TV is a two-person job. Don't be bold!

What's in your box?



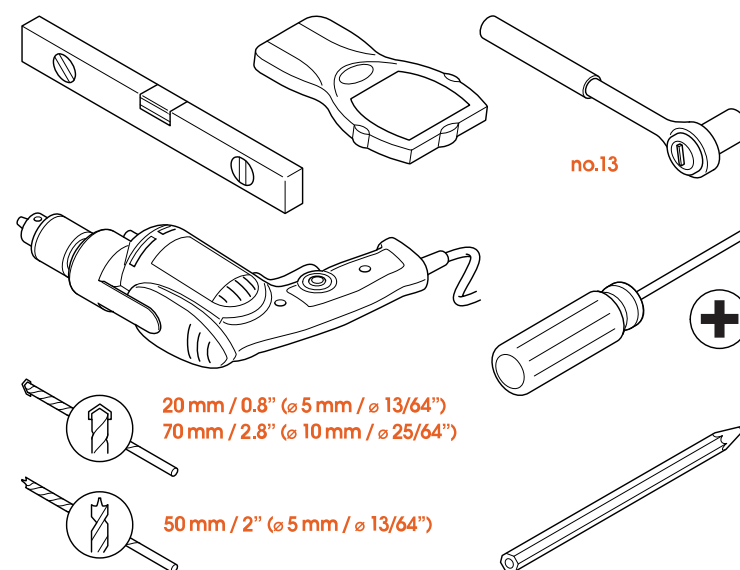
- Something missing? Make sure your packaging has everything in place:
 - A. Wall mount, with interface attached
 - D. Safety instructions
 - E. Bolts for fastening strips on TV (see contents below)
 - F. Spacers
 - G. Washers \varnothing 26mm
 - H. Screws
 - I. Plugs
 - J. Washers \varnothing 26mm
 - K. Upper wall plate cover
 - L. Lower wall plate cover
 - S. Interface extension strips
 - T. Cable sleeve
 - U. Interface cover
 - V. Drilling template
- Contents of the TV fasteners kit:
 - 4x M6x12mm
 - 4x M6x25mm
 - 4x M6x35mm

- 4x M8x12mm
- 4x M8x25mm
- 4x M8x45mm
- 4x M6x18mm washer
- 4x spacer 10mm
- 4x spacer 5mm



Need a long HDMI cable? Or a Cable Cover to hide your wall cables? Visit us online and order the right accessories directly through our website (<https://www.vogels.com/en-gb/c/tv-bracket-accessories>).

Got your tools ready?



- Don't start without all the necessary tools:
 - Spirit level
 - Stud finder (for walls with wooden studs only)
 - Socket wrench no. 13
 - Large crosshead screwdriver
 - Drilling machine
 - For stone walls:
 - 20mm / 0.8" (ø 5mm / ø 13/64") masonry drill bit (for predrilling)
 - 70mm / 2.8" (ø 10mm / ø 25/64") masonry drill bit
 - For walls with wooden studs:
 - 50mm / 2" (ø 5mm / ø 13/64") wood drill bit
 - Pencil

Take care of your safety



- Who cares about looking cool? Always wear personal protective equipment:
 - Eye protection
 - Ear protection
 - Safety shoes

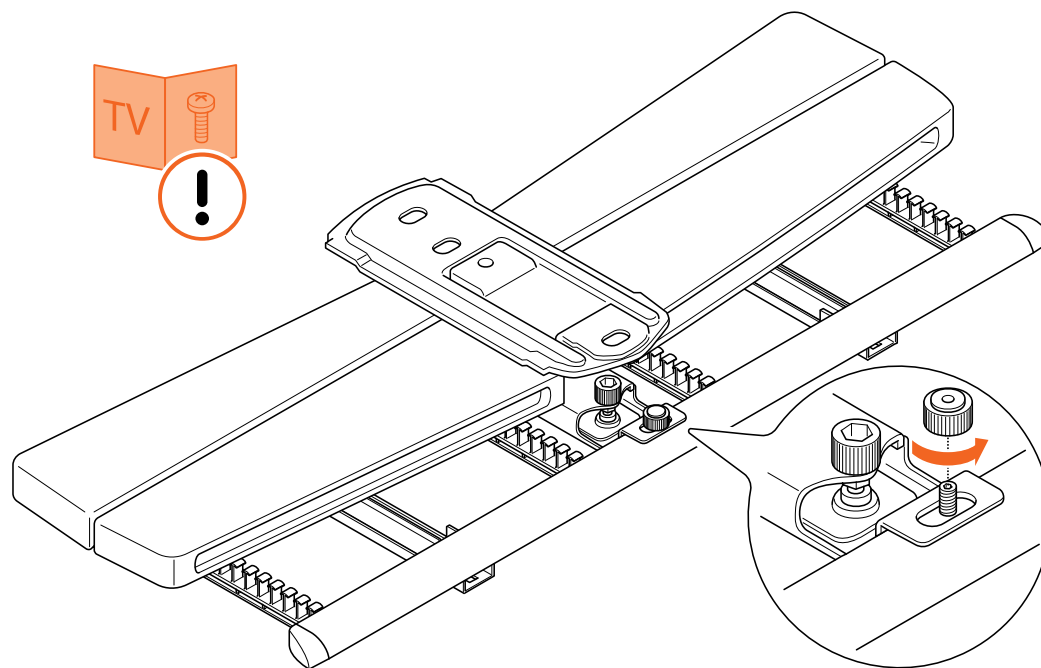


Lifting your TV is a two-person job. Don't be bold!

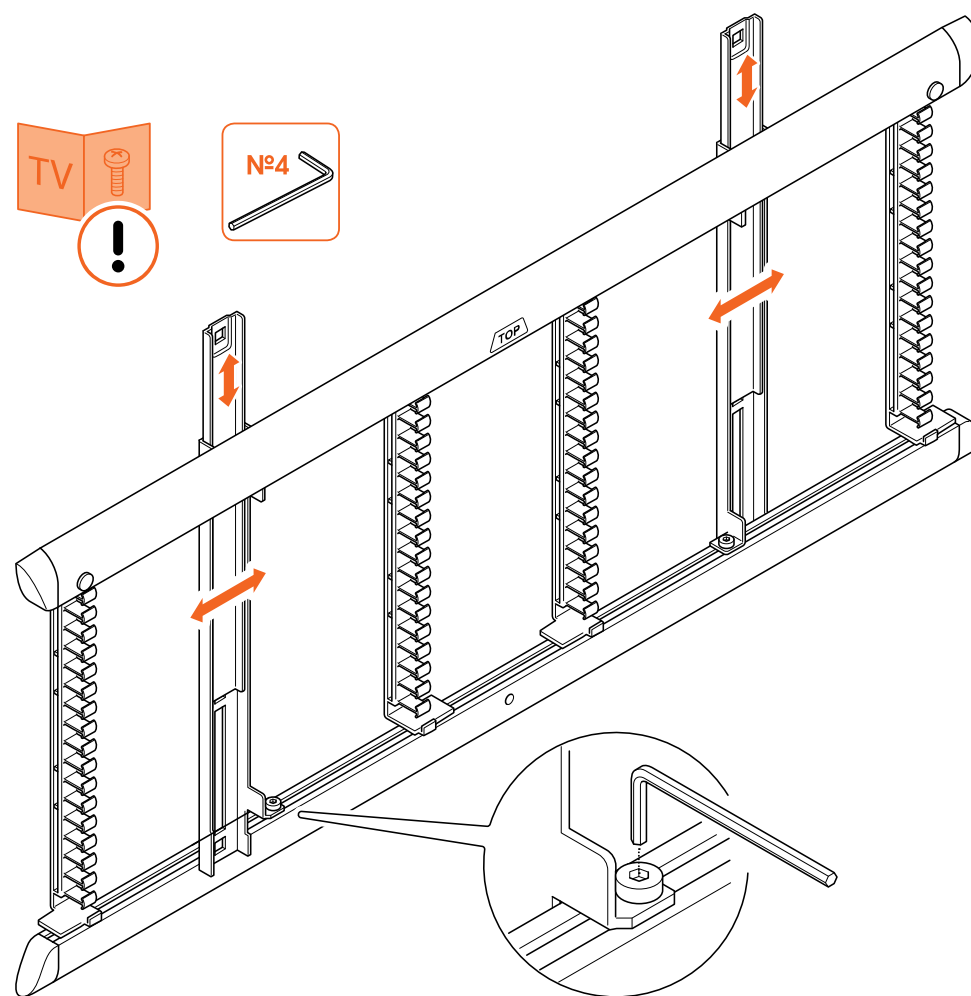
Ready, set, get installing!

Step 1: Attach the interface to the TV

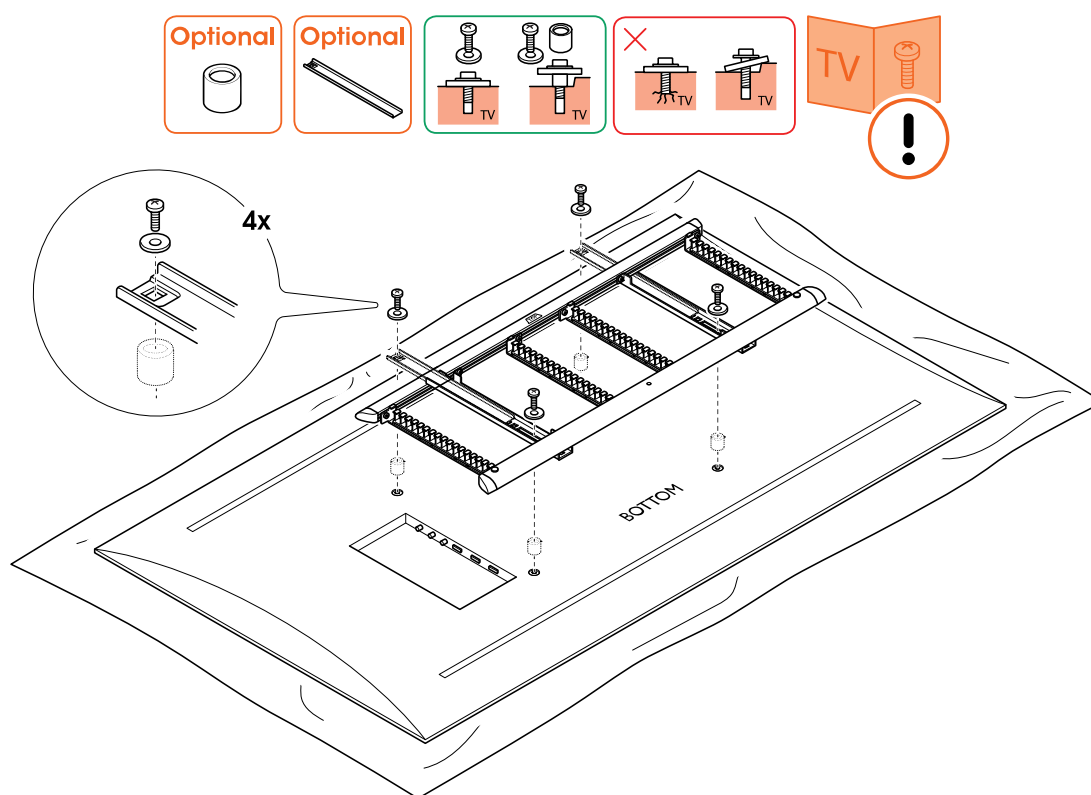
1. Carefully place the **wall mount** ① with the attached **interface**, and the TV face down on a clean surface without any obstacles.



2. Remove the **thumbnut** and detach the **wall mount** ① from the **interface**. Keep the **thumbnut** for later use.



3. Check the mounting holes on the TV screen. Adjust the dimensions of the **interface** accordingly, after loosening the **pre-attached bolts** with the **Allen key**.
4. Additionally, **interface extension strips** ⑤ can be inserted into the top or bottom side of the vertical strips to increase the height of the **interface**. Make sure both **interface extension strips** ⑤ are at the same height and do not stick out.



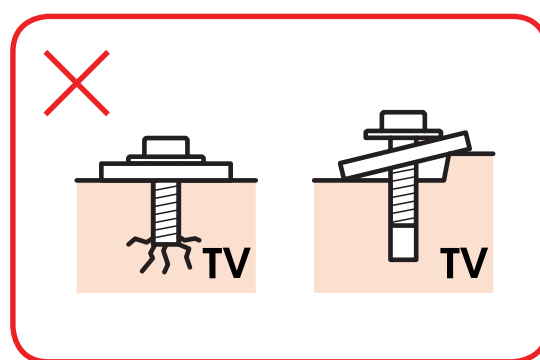
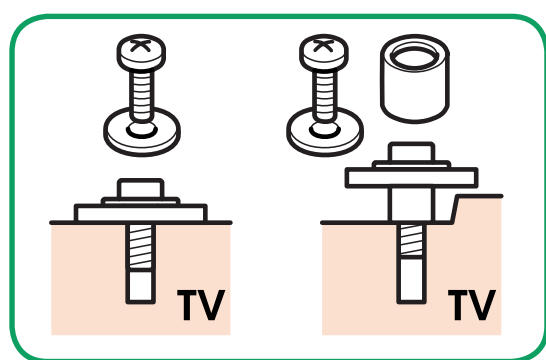
5. Attach the **interface** to the TV screen with the **bolts** ⑤ and **spacers** ⑥. Make sure the top side of the frame is positioned correctly, as indicated by the word 'top' on the **interface**.
6. After adjusting the dimensions of the **interface**, make sure to tighten the **pre-attached bolts** with the **Allen key**.



Are you missing any bolts? Or need different ones? The friendly team at Vogel's Consumer Care are waiting to help: [vogels.com/contact](http://www.vogels.com/contact) (<http://www.vogels.com/contact>).



Make sure bolts and spacers are positioned correctly.



Refer to the user manual of your TV for the correct mounting material.

Step 2: Attach the wall mount to the wall

How well do you know your walls? What they're made of matters more than you think...

Solid concrete / brick wall

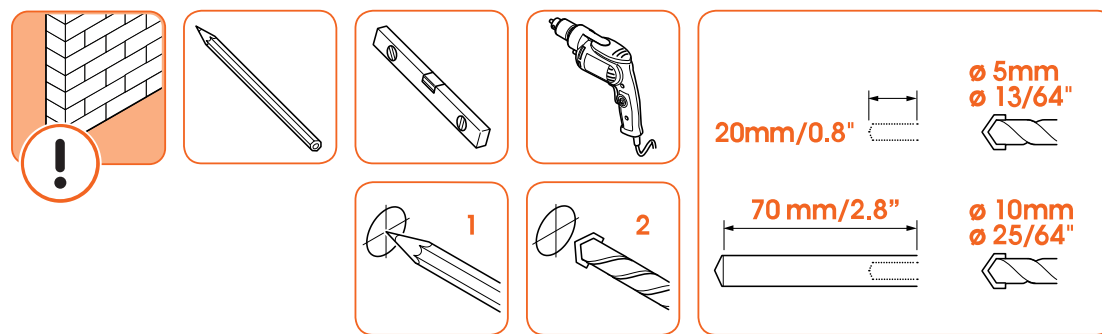


If you are mounting your TV screen onto a wall with wooden studs, please follow the instructions in the *Wall with wooden studs* section.

For this step you will need:

- Drilling template ②
- Drilling machine
- 20mm / 0.8" (∅ 5mm / ∅ 13/64") masonry drill bit (for predrilling)
- 70mm / 2.8" (∅ 10mm / ∅ 25/64") masonry drill bit
- The contents of the wall mounting kit ① ① ①

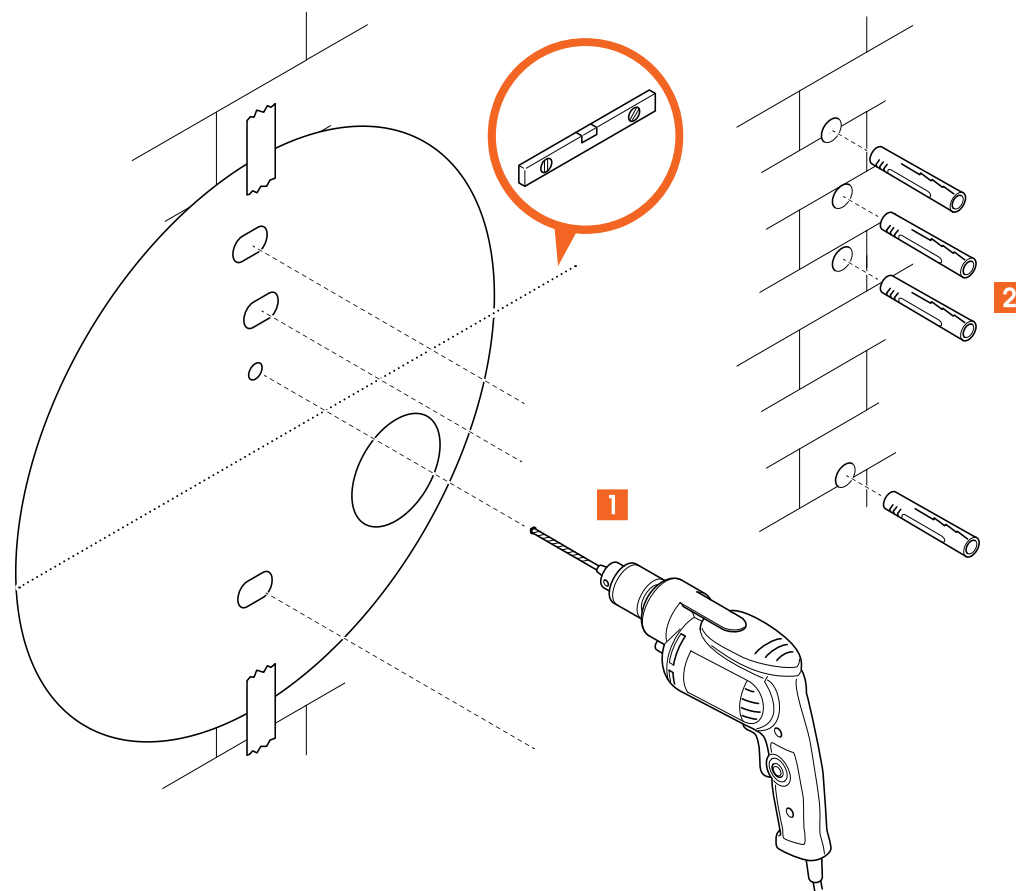
- Spirit level
- Pencil



1. Determine where to mount your TV screen.

Use the **drilling template** ② to mark the correct position on the wall if you're using the TVA 7000 cable column or if the connecting cables protrude from the wall. The **drilling template** ② can be found on the back of the inlay card provided in the package.

In other situations, download and use our free DrillRight app to find the perfect mounting height and mark the first drilling hole. Always use the **drilling template** ② to mark the other drill holes.

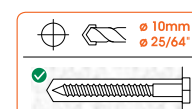


2. Drill the holes. Make sure to drill the positioning hole first. Pre-drill with a smaller drill to avoid damage to the wall.

3. Put the **plugs** ① in the holes.

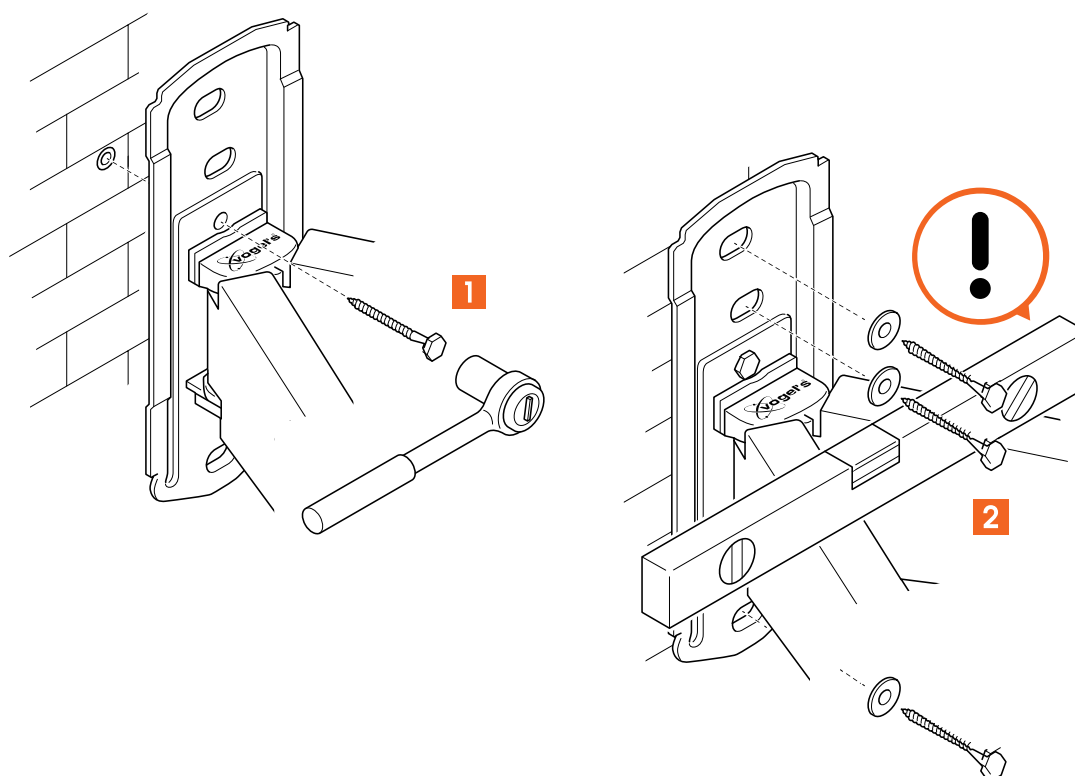


How deep do you drill? Check if the entire screw (except its head) fits in the hole before placing the plugs. This stops things from breaking. Vacuum the hole after drilling.





The cable hole should only be used to lead cables that come out of the wall through the wall mount. Do not use the cable hole to attach the wall mount to the wall.

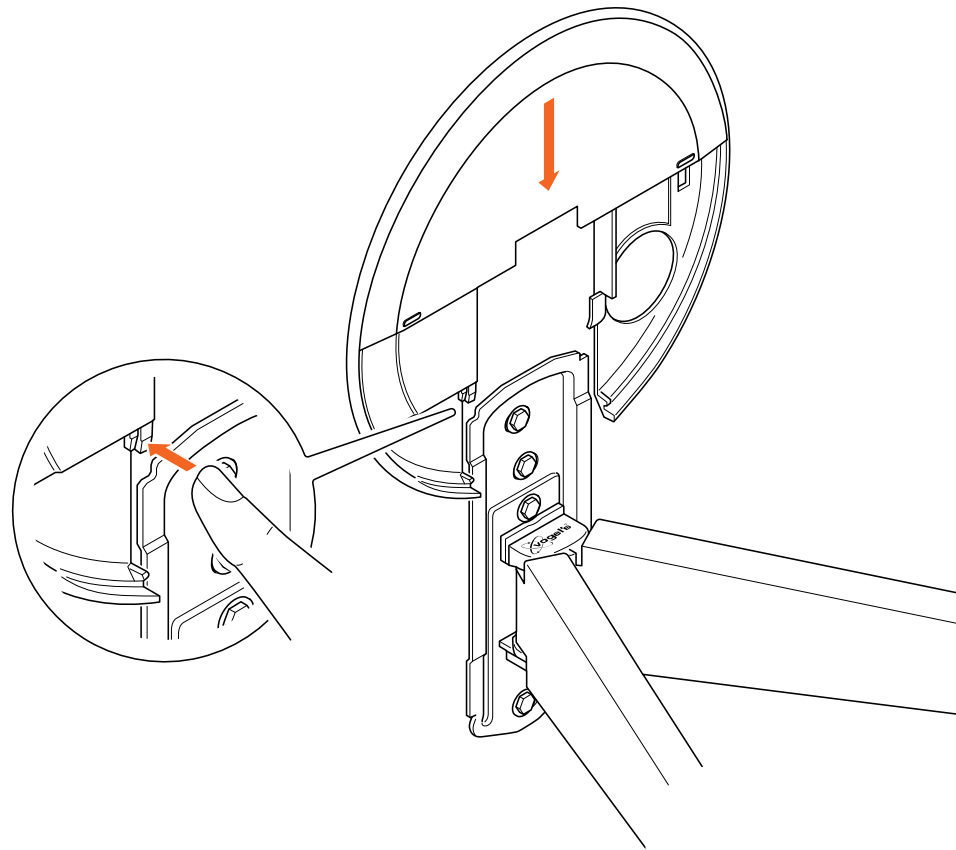


4. Attach the wall mount to the wall while making sure to:

- begin with the hole directly above the Vogel's logo on the **wall mount** ①
- use the spirit level to level the wall mount
- attach the **wall mount** ① to the wall with the provided **screws** ② and **washers** ③



Lubricate the screws for easy screwing in.



5. Slide the **upper wall plate cover** ① onto the **wall mount** ②. To remove the cover plate, press the left tab and slide it off the wall mount.

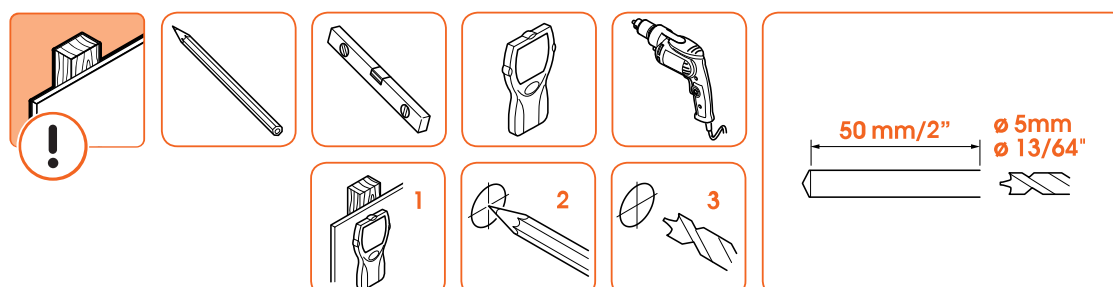
Wall with wooden studs



If you are mounting your TV screen onto a concrete/brick wall, please follow the instructions in the Solid concrete/Brick wall section.

For this step you will need:

- Drilling template ③
- Drilling machine
- 50mm / 2" (ø 5mm / ø 13/64") wood drill bit
- The contents of the wall mounting kit ④ ⑤
- Spirit level
- TVA 6950 Stud adapter (optional, available on www.vogels.com)
- Stud finder (for walls with wooden studs only)
- Pencil



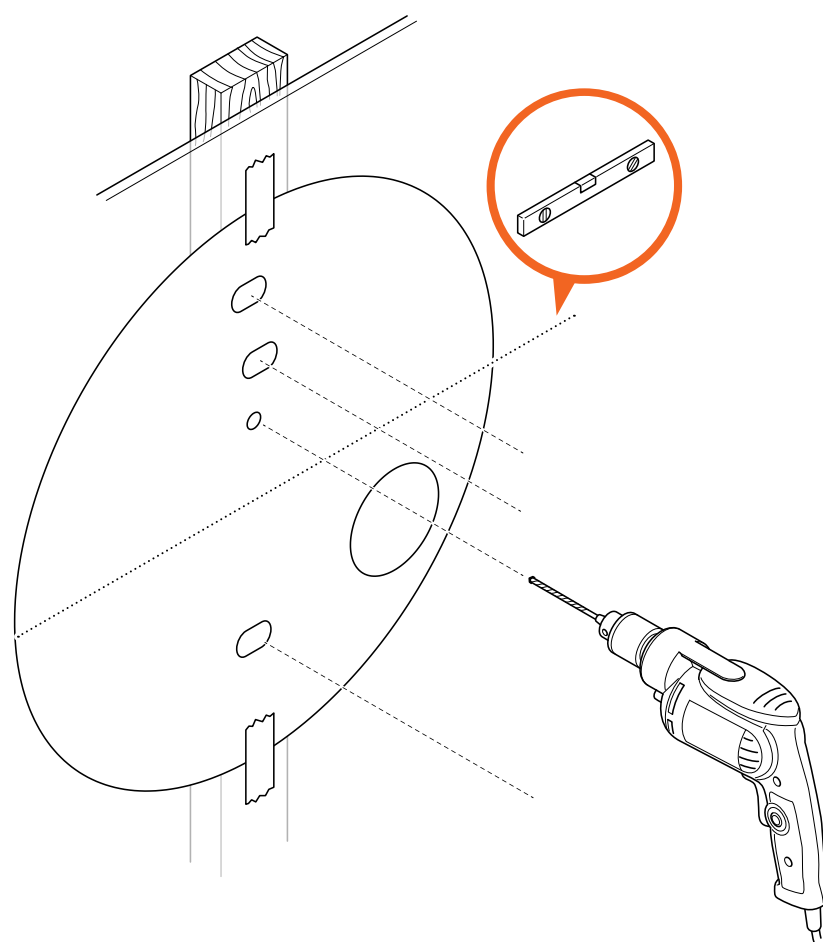


Don't just guess! The wall mount must always be attached to the studs. Always use a stud finder to determine the position of studs. Don't destroy your belongings!

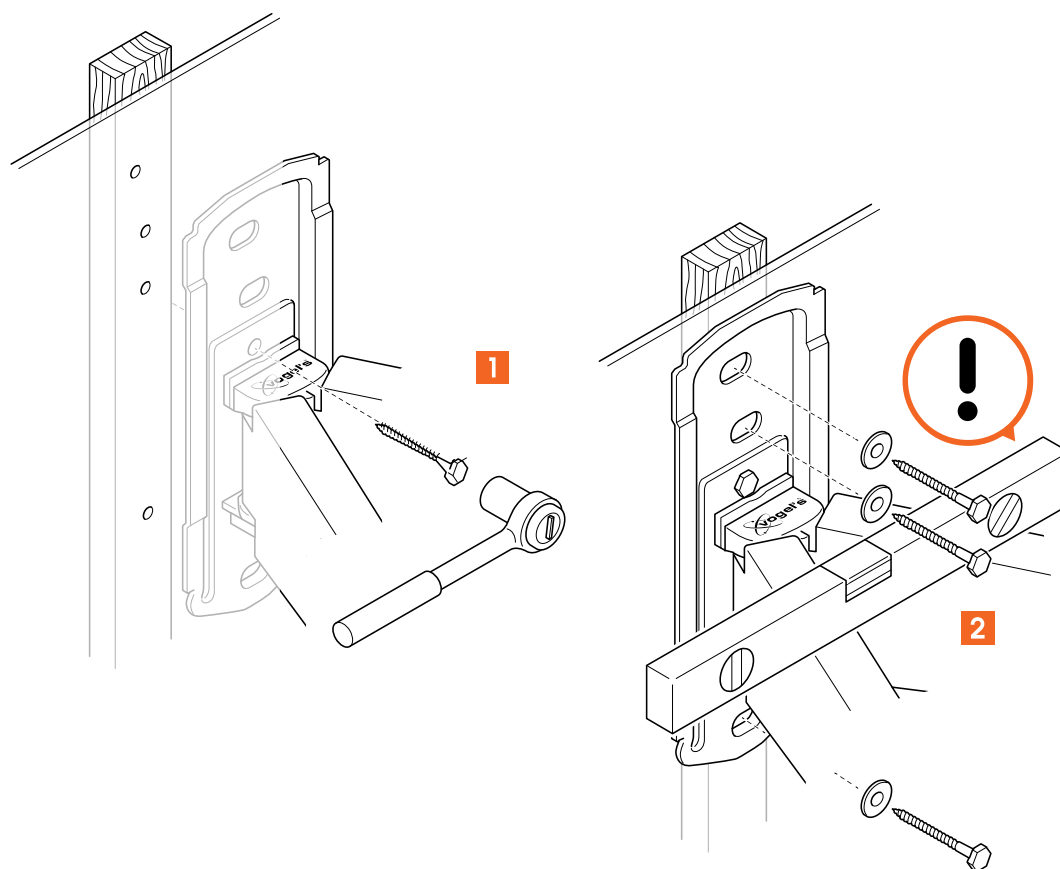
1. Determine where to hang your TV screen.

Use the **drilling template** ② to mark the correct position on the wall if you're using the TVA 7000 cable column or if the connecting cables protrude from the wall. The **drilling template** ② can be found on the back of the inlay card provided in the package.

In other situations, download and use our free DrillRight app to find the perfect mounting height and mark the first drilling hole. Always use the **drilling template** ② to mark the other drill holes.



2. Now for the fun part... drilling the holes. Make sure to drill the positioning hole first.

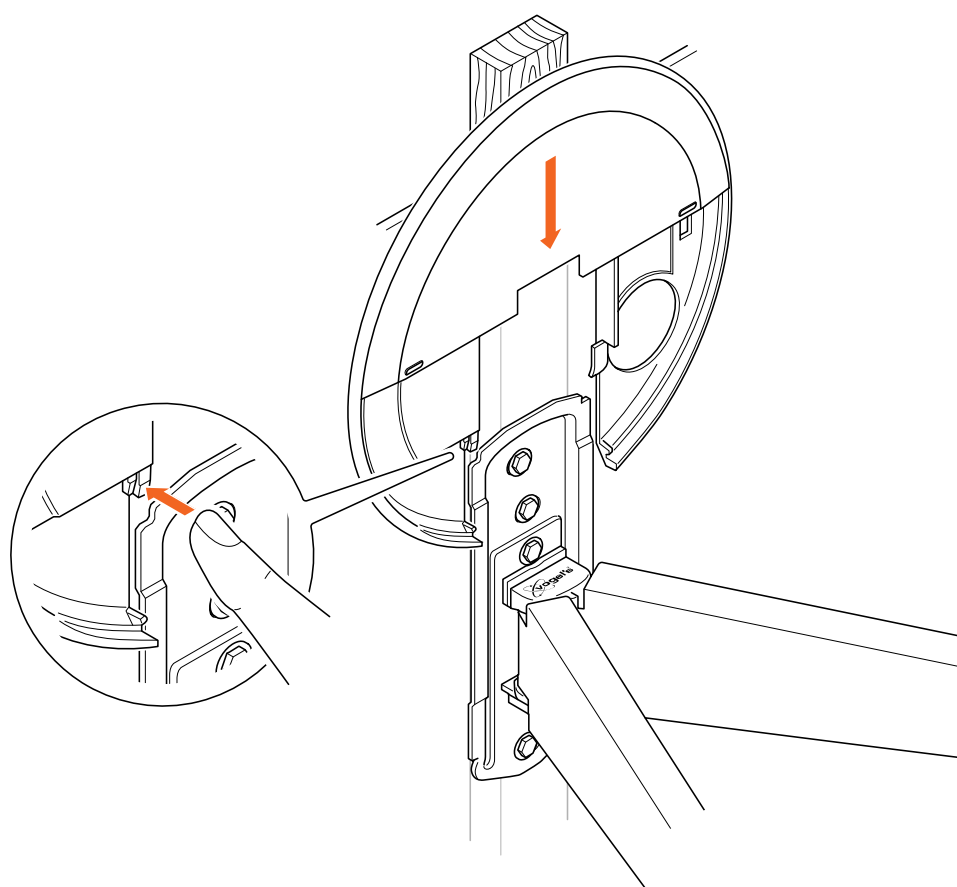


3. Attach the wall mount to the wall while making sure to:

- begin with the hole directly above the Vogel's logo on the **wall mount** ①
- use the spirit level to level the wall mount
- attach the **wall mount** ① to the wall with the provided **screws** ② and **washers** ③



Lubricate the screws for easy screwing in.



- Slide the **upper wall plate cover** ⑫ onto the **wall mount** ①. To remove the cover plate, press the left tab and slide it off the wall mount.

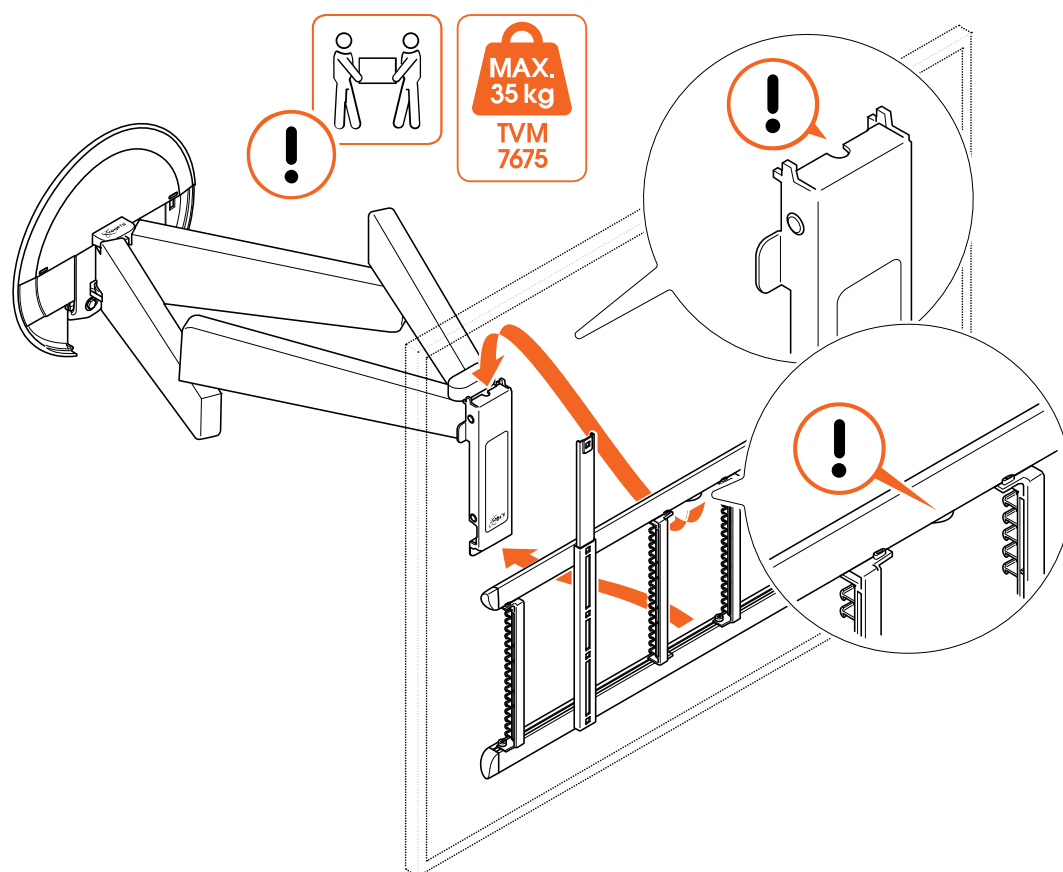
Other wall type / I don't know my wall type



If your wall is a little special – for example, hollow bricks, metal stud walls, wood panels or plasterboard – visit [information for different wall types](https://www.vogels.com/en/c/tv/tv-on-the-wall) (<https://www.vogels.com/en/c/tv/tv-on-the-wall>).

If you aren't sure, don't worry! Just ask your installer, specialist supplier or the Vogel's Consumer Care team at www.vogels.com/contact (<http://www.vogels.com/contact>).

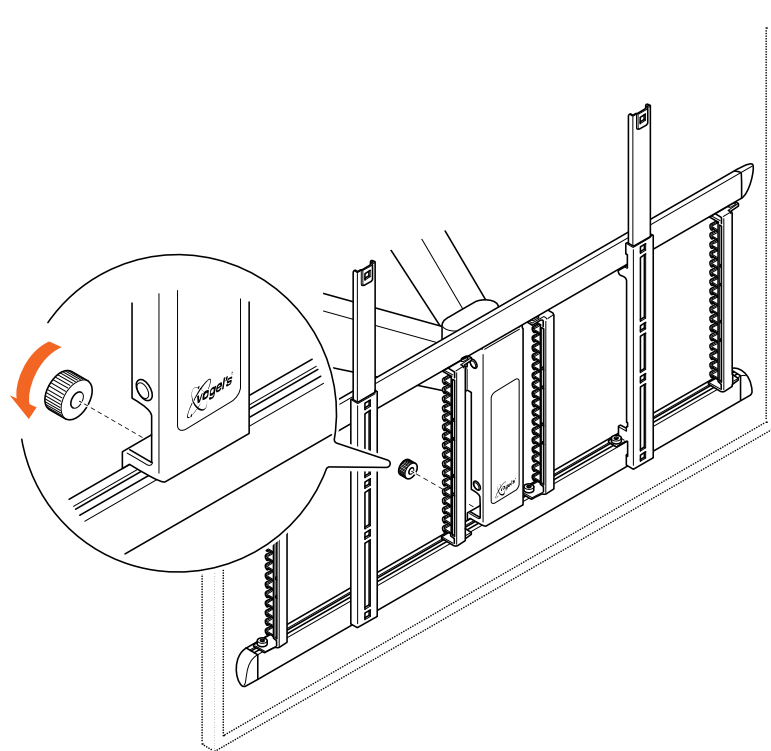
Step 3: Attach the TV to the wall mount



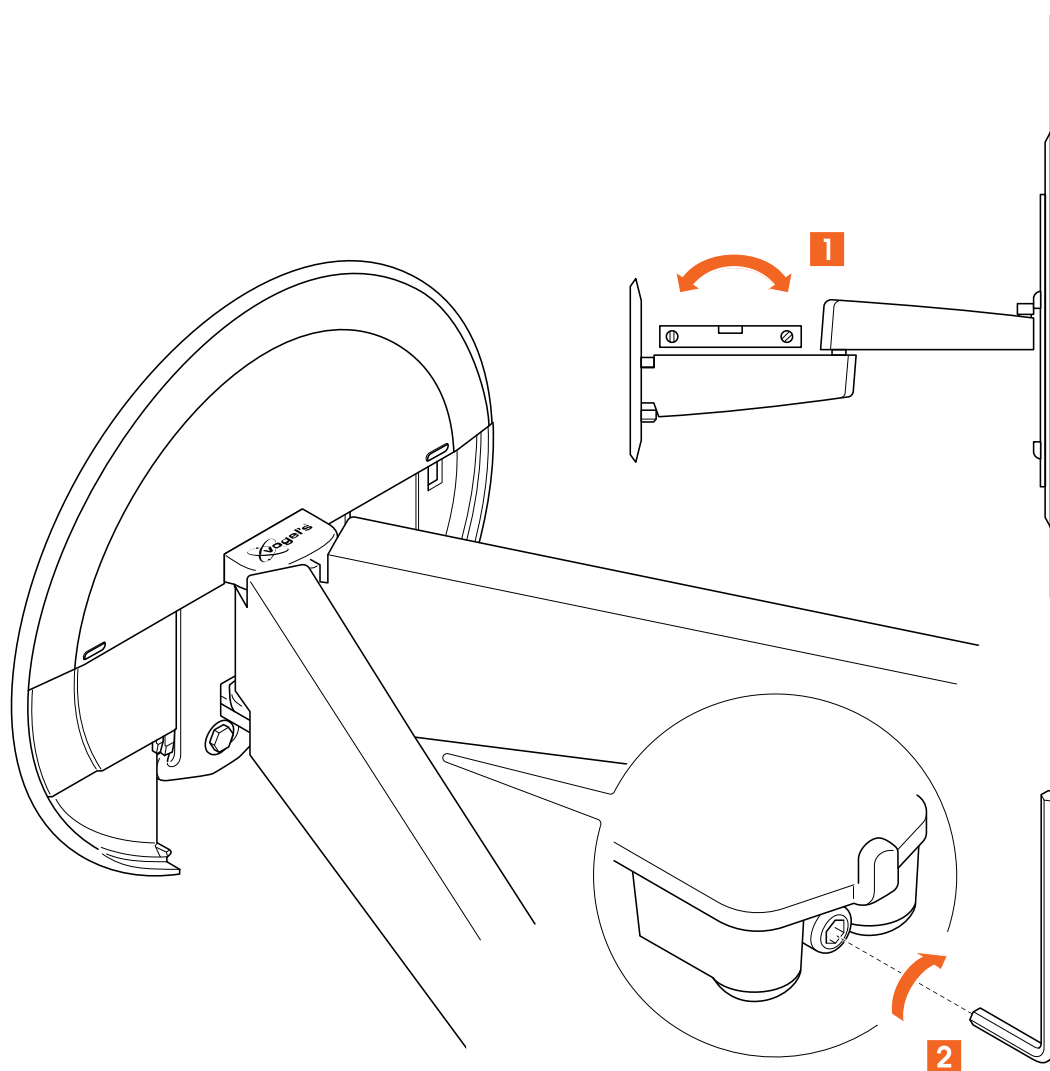
- Carefully lift and attach the TV onto the interface bracket on the **wall mount** ①. Make sure the plug on the interface falls into the notch on the wall mount.

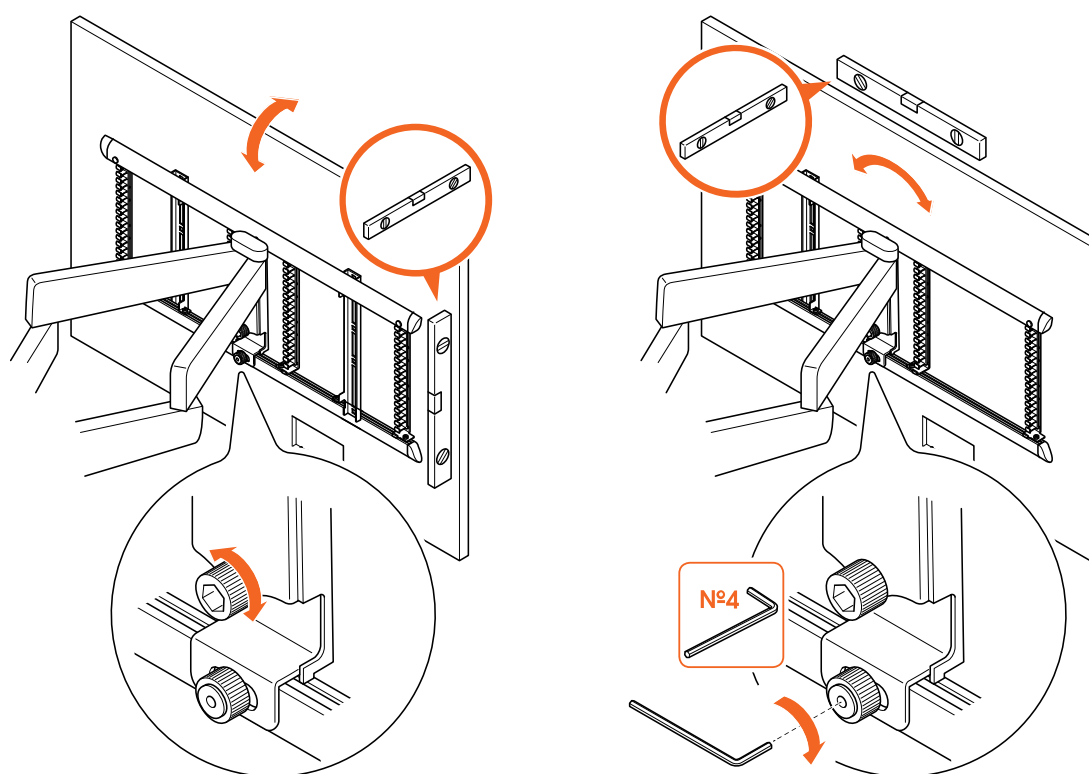


Lifting your TV is a two-person job. Don't be bold!



2. Secure the interface to the **wall mount** with the saved **thumbnut** from step 1.



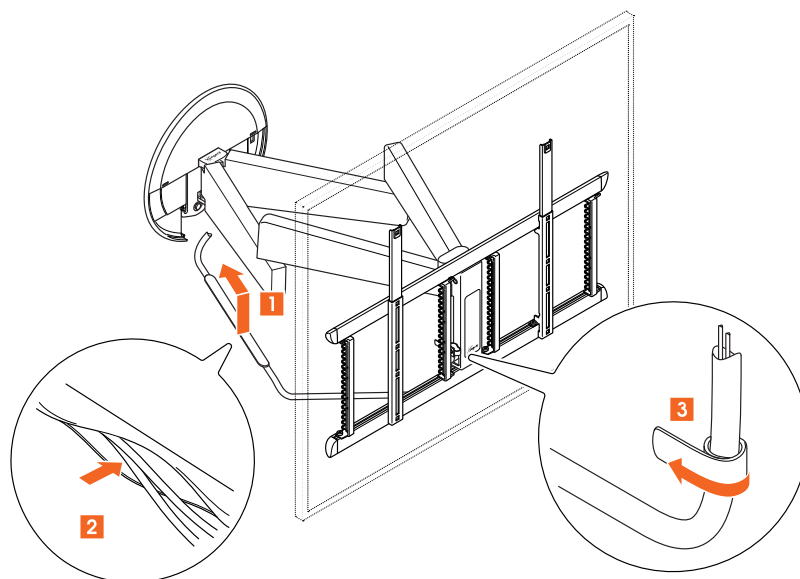


3. Level the **wall mount** and the TV screen. Use a spirit level and the **Allen key** to correct the position. Tighten the **thumbnut** and the **thumb bolt** with the **Allen key** when finished.

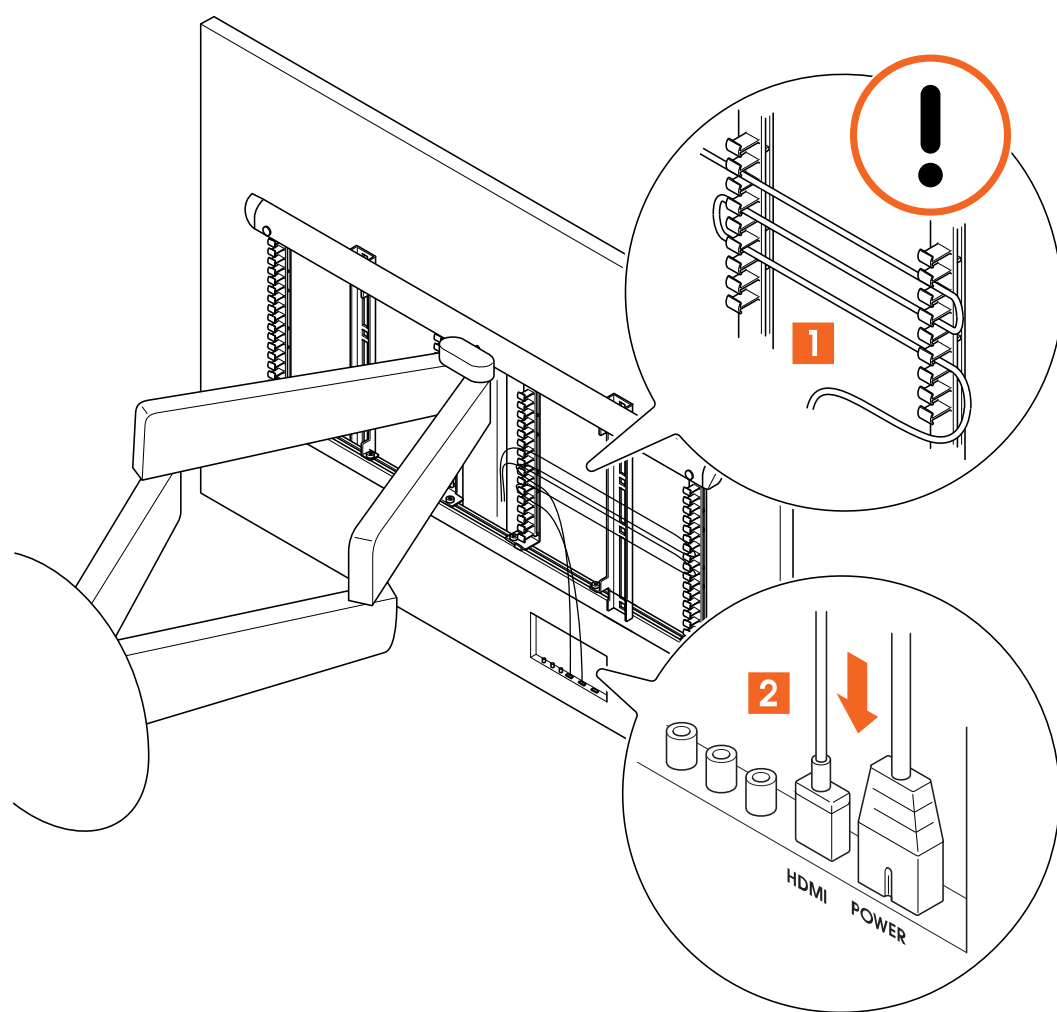


The wall mount and TV must be leveled vertically and horizontally before using the wall mount!

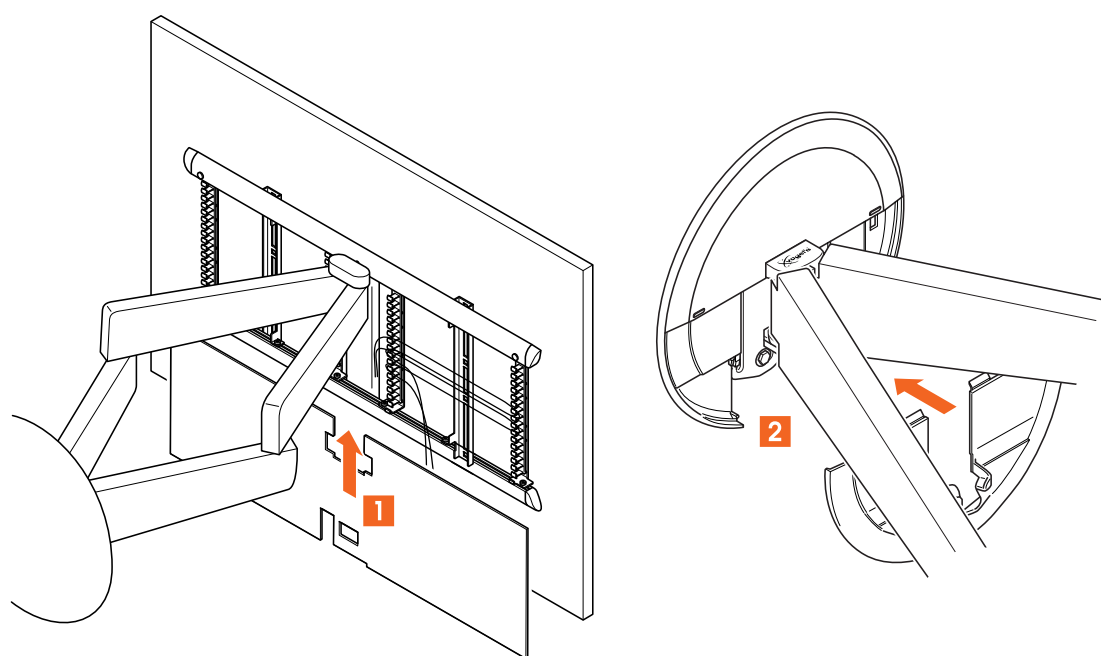
Step 4: Attach the cables to the wall mount



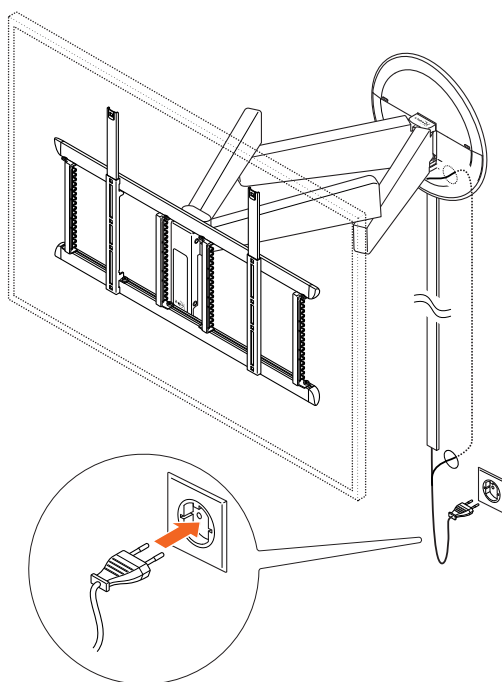
1. Attach the **cable sleeve** ① to the **wall mount** ②, by sliding it into the holes on the bottom side of the right arm.
2. Put the TV power cable and the other cables into the **cable sleeve** ①.
3. Secure one end of the **cable sleeve** ① to the frame by using the velcro strip.



4. Connect the power cable and the other cables to the TV. Make sure all other cables are neatly stowed away by using the vertical cable clip strips on the **interface**.



5. Put the **lower wall plate cover** ① onto the wall mount and the **interface cover** ② onto the back of the **interface**.



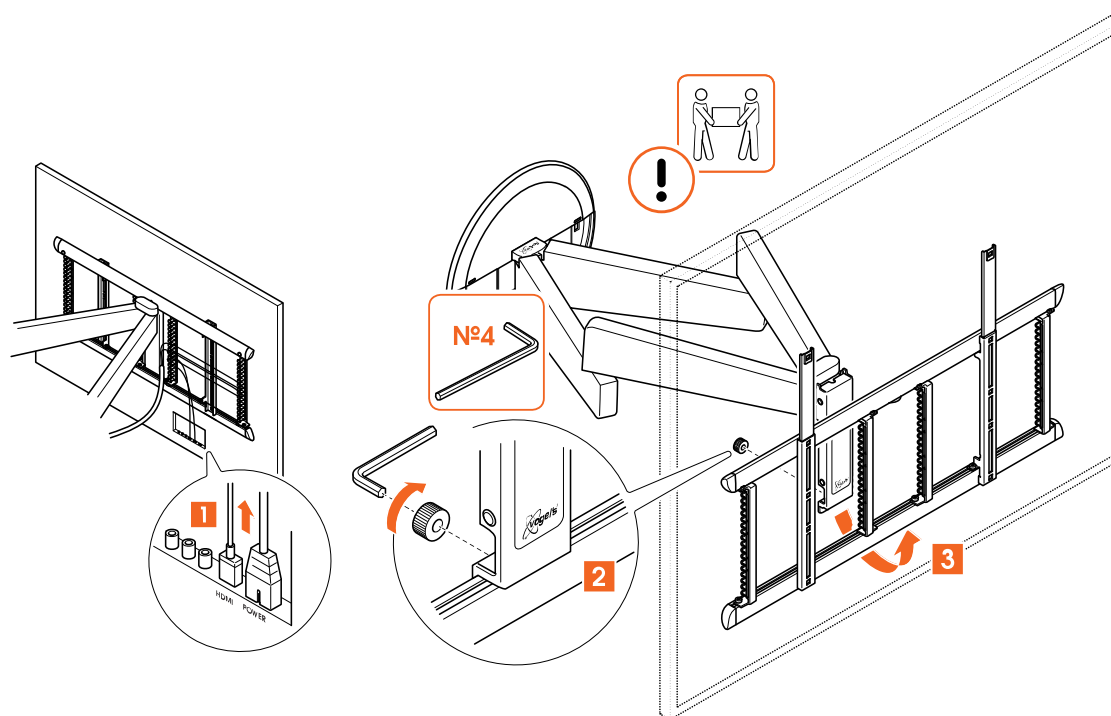
6. Connect the TV power cable to the power outlet.

7. Your DesignMount is now ready to be used!



Need a long HDMI cable? Or a Cable Cover to hide your wall cables? Visit us online and order the right accessories directly through our website (<https://www.vogels.com/en-gb/c/tv-bracket-accessories>).

Removing your TV



1. Remove all cables from your TV and **interface**.

2. Remove the bottom thumbnut from the **interface**.

3. Lift your TV off of the **interface** bracket, and put it down somewhere safe.



Again, lifting your TV is a two-person job. Always get help.

Confused? Unsure? Going crazy?

There's plenty of help waiting for you, online:



info@vogels.com (<mailto:info@vogels.com>)
www.vogels.com/contact (<http://www.vogels.com/contact>)



[facebook.com/
VogelsForSure/](https://www.facebook.com/VogelsForSure/) (<https://www.facebook.com/VogelsForSure/>)



[instagram.com/
vogels_official/](https://www.instagram.com/vogels_official/) (https://www.instagram.com/vogels_official/)



[www.youtube.com/
c/VogelsForSure](https://www.youtube.com/c/VogelsForSure) (<https://www.youtube.com/c/VogelsForSure>)

Troubleshooting

Found a problem you can't fix? Don't panic... try these!

Problem

I don't have the right bolts for my TV!

Cause

The world of TV technology is always changing – it can be hard to keep up sometimes. So, it might be the case that the correct bolt size is not included... you're just too advanced!

Solution

Just ask Vogel's Consumer Care to request a service kit, and we'll send everything you need. [Click here](http://www.vogels.com/contact) (<http://www.vogels.com/contact>) to contact Vogel's Consumer Care.

Problem

My wall screws have snapped!

Cause

You might not be drilling deep enough... or your drill could be too blunt, so that the hole is too narrow and the screw gets stuck.

Solution

Use another hole in the wall plate to fix the wall mount to the wall. Make sure you use a sharp drill of the correct size. Vacuum the hole after drilling. Check if the entire screw (except its head) fits in the hole before placing the plugs.

In case of other issues / questions, please contact: consumercare@vogels.com
(<mailto:consumercare@vogels.com>)

FAQs



Where can I request the correct bolts for my TV (a service kit)?

Whatever you need, simply contact your local Vogel's dealer or Vogel's. [Click here \(http://www.vogels.com/contact\)](http://www.vogels.com/contact) to contact Vogel's Consumer Care.

Where can I find installation videos?

Click or tap the button on the front page of this manual. The installation video can be found at the product page of your product on our website. It can also be found on our YouTube channel: [www.youtube.com/c/VogelsForSure \(http://www.youtube.com/c/VogelsForSure\)](http://www.youtube.com/c/VogelsForSure).

What if I need spare parts?

You can buy some spare parts on our webshop. Please visit the service kits/spare parts page from the bottom menu [on our website \(https://www.vogels.com/\)](https://www.vogels.com/) or enter the product type number in the search bar. If you require a different part or if a part is missing, please contact your local dealer or [Vogel's Consumer Care \(http://www.vogels.com/contact\)](http://www.vogels.com/contact).

Where can I find the drilling template?

The drilling template is printed on the inlay card in the box. You can cut it out for your convenience.

How high do I need to hang my TV?

The center of your TV should ideally be positioned at eye level, while seated. When a wall mount with tilt function is used, your TV can be mounted above eye level. Download and use the free [DrillRight app \(https://www.vogels.com/DrillRight\)](https://www.vogels.com/DrillRight) to determine the height of the TV and to mark the first hole.

If you cannot use the app or want to calculate the height, please see our [instructions for manual positioning \(https://downloads.vogels.com/en/FAQ-drillrightapp-2024.pdf\)](https://downloads.vogels.com/en/FAQ-drillrightapp-2024.pdf) (available online in English only, available upon request in French, German and Dutch).

'I'm stuck in the DrillRight app, what should I do?'

Please check out our [Frequently Asked Questions about the DrillRight app \(https://downloads.vogels.com/en/FAQ-drillrightapp-2024.pdf\)](https://downloads.vogels.com/en/FAQ-drillrightapp-2024.pdf) (available in English only).

Which bolts or screws do I need to use?

Vogel's offers a complete assembly kit with all mounting materials included in the box, for both your TV and wall. Vogel's offers a complete assembly kit with all mounting materials included in the box. Do you miss the correct bolts for your TV? Please contact your local Vogel's dealer. [Click here \(http://www.vogels.com/contact\)](http://www.vogels.com/contact) to contact Vogel's Consumer Care.

Why do you use Fischer® plugs?

The Fischer® DuoPower plug is widely regarded as the best standard in plugs. Don't settle for less!

What is VESA?

VESA is a standard pattern of mounting location holes on the back of a TV which allows many standard TV mounts to be easily fitted to your TV.

What is the minimum screen size of the TV in combination with the wall mount?

The minimum screen size is 40 inch (102 cm).

What is the maximum screen size and weight of the TV in combination with the tv wall mount?

The maximum screen size is 77 inch (196 cm) and maximum weight is 35 kg (77 lbs). The Screen Protection System (SPS®) prevents your TV bumping onto the wall (up to 65 inch).

Does this product have a tilt function?

There is no tilt in this product.

Can the DesignMount TVM 7655 be upgraded to MotionMount?

No, that's not possible.

What is the guarantee of this wall mount?

Vogel's gives you a lifelong guarantee for defects in materials and manufacturing of the wall mount. The guarantee is 15 years.

What is the maximum turn angle?

The maximum turn angle is 120° (2x 60°).

What is the maximum distance the TV can move from the wall?

The maximum distance from the wall is 72 cm.

Is there also a special OLED version of the DesignMount?

No, there is no dedicated OLED version. The VESA interface is also optimized for OLED.

Can I use the Vogel's cable cover TVA 7000 together with this product?

Yes, the TVA 7000 cable cover is specially developed for the SIGNATURE DesignMount (and MotionMount). This cable cover fits seamlessly with the wall plate of your SIGNATURE wall mount. The cable cover is available in black and white. Please mount the wall mount at a height of 115 cm from the floor.

Are all mounting materials included?

Yes, all mounting materials are included.

Is the drilling template of the SIGNATURE DesignMount (TVM 7655) the same as of the MotionMount (TVM 7675)?

Yes, the drilling template is the same for all SIGNATURE Series products.

Are the drilling holes of the SIGNATURE TV wall mounts (wall plate) in the same position as those of the NEXT TV wall mounts?

Yes, although the wall plate has a different shape, the positioning of the four holes has remained the same.

Can I level this mount both in horizontal and vertical direction?

Yes, with 3D-LEVELING™ you always get your TV level. This feature includes slanting wall correction and precise after-installation leveling (horizontally and vertically).

In case of other issues / questions, please contact: consumercare@vogels.com
(mailto:consumercare@vogels.com)

Go green!

We care about the planet. If you're getting rid of the packaging or the TV mount itself, please check your municipality's guidelines for the best disposal options near you. For information about the materials used in the packaging, visit www.vogels.com/recycle (<https://www.vogels.com/recycle>). Recycling matters!



Guarantee



Thanks again for choosing Vogel's! Durability is paramount in the development and production of our products. That is why Vogel's gives you a 15 year guarantee for defects in materials and manufacturing. For defects in electronic parts we provide a guarantee of 2 years, unless local statutory law and regulation dictate a longer minimum period. We resolve any issues regarding product complaints or returned products and assess all complaints based on usage.

If your product is not functioning properly due to material faults or manufacturing defects, we will repair it free of charge or replace it at our own discretion.

If you have any problems with our product or want to know whether the guarantee is applicable, please:

1. Complete the contact form or mail our Consumer Care Team. Preferably, please add a picture.
2. Within 2 business days you will be contacted by our local Vogel's distributor.
3. If the guarantee is invoked, the product should be returned, together with the original purchase document (invoice, sales slip or cash receipt). The purchase document should clearly show the name of the supplier and the date of purchase. You will be informed about the specific return address and further procedure.

Vogel's guarantee shall lapse in the following cases:

- If the product has not been installed or used in accordance with the instructions;
- If applicable, if the holes in the wall have not been properly drilled in accordance with the Vogel's installation instructions for the applicable wall type;
- If the product has been altered or repaired by someone other than Vogel's;
- If a fault arises due to external causes (outside the product) such as for example lightning, water nuisance, fire, scuffing, exposure to extreme temperatures, weather conditions, solvents or acids, wrong use or negligence;
- If the product is used for different equipment than is mentioned on or in the packaging.

Do you have any other questions? Please make use of our contact form.

