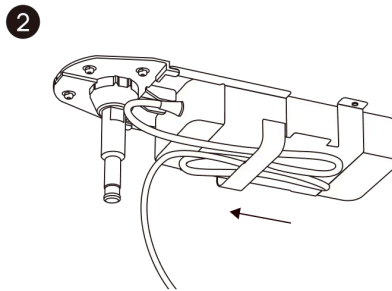


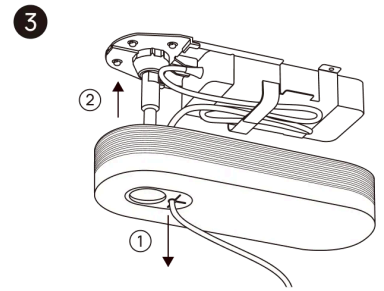
Determine the projector mounting position on the ceiling. Secure the base to the ceiling using the supplied expansion screws.

\* The base must be mounted on a concrete structure to ensure the stability and safety of the gimbal bracket.

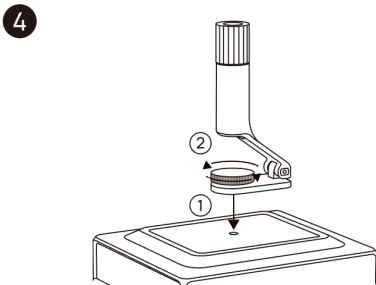
- (a) Use M8 caliber (8mm diameter) screws for Hole a as shown in the image.
- (b) Use M6 caliber (6mm diameter) screws for Hole b as shown in the image.



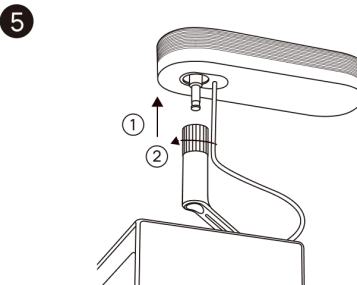
Insert the adapter into the adapter storage slot on the base and secure the DC cord to the base using the cable tie.



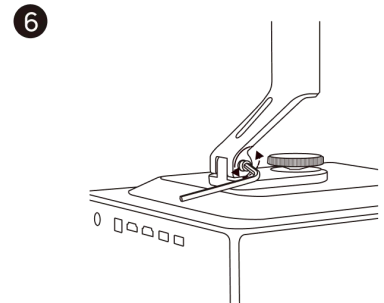
Thread the projector's DC cord through the hole in the silicone cover, and attach the magnetic decorative box to the base.



Align the gimbal bracket with the threaded hole at the bottom of the projector and tighten the 1/4" screw knob.



Align the groove on the gimbal bracket with the connector on the base and gently push the gimbal bracket onto the base. When you feel that the gimbal bracket is locked, tighten the horizontal adjustment knob.



Loosen the pitch adjustment knob using a hex key, adjust the tilt angle of the bracket to the desired position, and tighten the pitch adjustment knob to complete the assembly.